

Brixworth Neighbourhood Development Plan

Time to cast your Vote!



The Brixworth Neighbourhood Plan is on the verge of becoming a legally binding document. The public referendum on the plan will take place on Thursday 1 December and it is vital that every Brixworth resident turns out to vote. The polling station will be in the Village Hall, which will be open from 7am to 10pm.

If there is a majority vote in favour, Daventry District Council will then have to use the Plan to determine planning applications within the parish of Brixworth – any application thereafter until 2029 that falls outside the scope of the Plan would not easily be approved.

Drawing up the Plans has been a long effort that involved many residents over the past four years. The Steering Group has spent four years establishing what the community valued, what could be achieved and to produce the Plan.

The exercise has been very much a joint effort and the resulting text shows a combination of ideas reflecting the consultation findings.

Secretary Mike Parsons shaped the Plan, interpreted the legislation, co-ordinated the scheme and reported back to the Council. Mick Bates and Frank Allen produced the photos and maps, which will

Have your say on Brixworth's future

December 1 is a date that should be circled in red in the calendar of anyone who gets a vote. It's the date of the referendum on the Brixworth Neighbourhood Plan.

The plan sets out a framework for future development in and around the village. It sets out which greenspaces should be protected and which views should be preserved, and gives guidance of what kind of development would be acceptable and under what circumstances.

It's the clear view of the plan's authors – based on extensive consultation with villagers – that future housing development in Brixworth should be limited. Brixworth has seen a huge amount of growth over the years, bringing its village character and infrastructure under a lot of pressure. The Plan's architects were keen to preserve the historic character of the village and limit the scope of future development to the already-approved second phase of the Saxon Rise estate plus infill within the existing village boundaries.

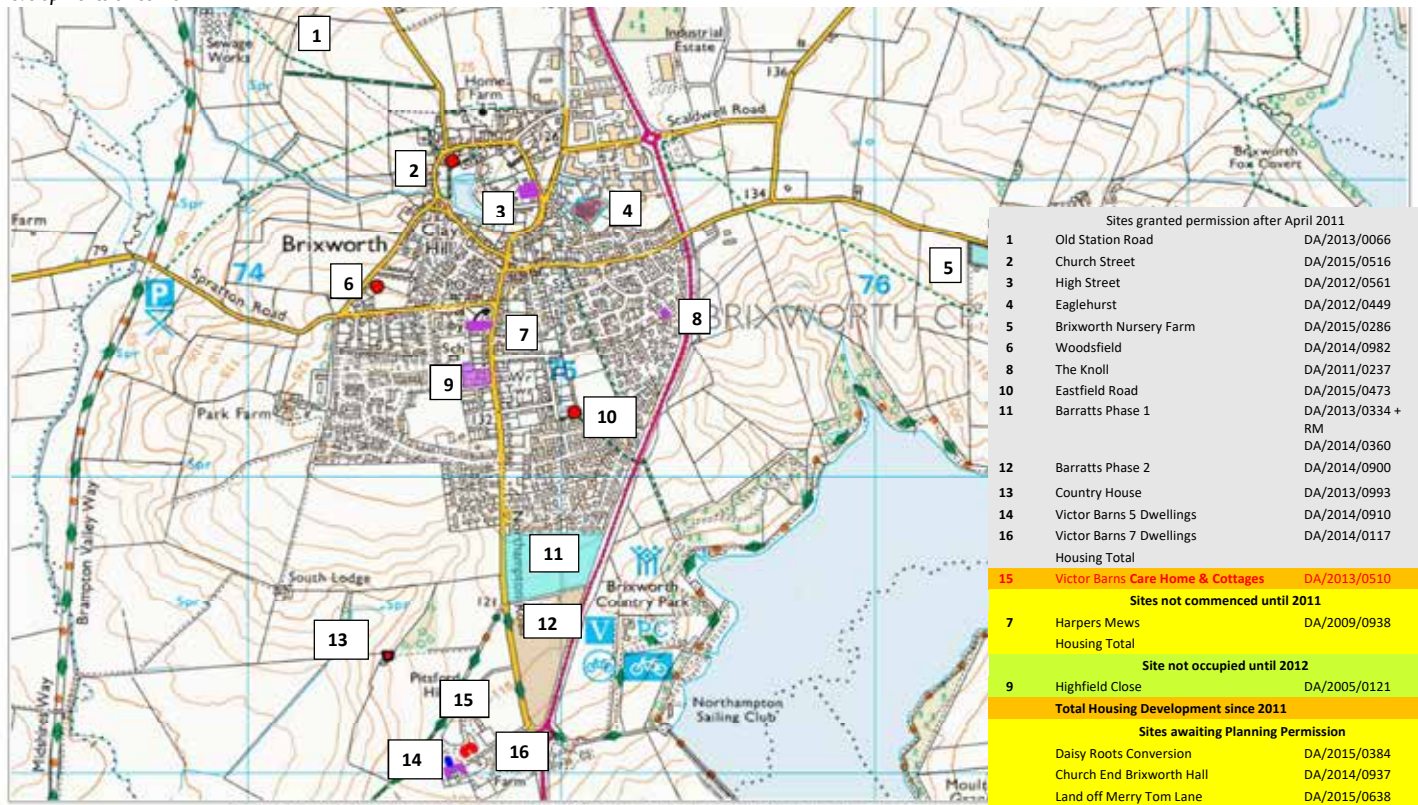
In its final version, the Plan is not quite as restrictive as its authors might have liked. Where the draft version of the plan identified four pieces of prime potential housing land as 'Local Green Spaces', protected from any development, the independent examiner required three of them to be removed from the final version of the plan. They are the land to the west of Northampton Road, backing onto Shelleycoates Road, Froxhill Crescent and Stonehill Way (which Carter Jonas tried and failed to get planning permission for in 2011), land at Froghall and Woodsfield, towards Spratton, and land at Station Road on the way to Creaton.

Because those pieces of land are now no longer protected Green Spaces, the final Plan won't be a blanket ban on development on these sites. Nevertheless, its policies on protecting the landscape and the views around Brixworth will make it much harder for future development to get approved – at least until 2029 – and will ensure that any development safeguards Brixworth's village character, history and views.

There can be no doubt that the Plan's Steering Group has gone the extra mile to try and protect Brixworth's character and to limit future development to what is going to be acceptable.

If the plan were rejected now, a new plan would have to be created – a process that could take years, during which the village would have no protection at all. And given that a guiding principle of the Neighbourhood Plan process is that such plans cannot place blanket bans on development, there's no guarantee any alternative plan would have any more teeth than the present one. – cfw

Heidi Flavell-White



The Brixworth Bulletin are:

Claudia Flavell-White, editor
882567; editor@brixworthbulletin.co.uk

Neal Brown, advertising
882334; ad.manager@brixworthbulletin.co.uk

Fiona Kelsall, invoicing

George Hammerschmidt, art and design
880212; art.editor@brixworthbulletin.co.uk

Louise Robinson, distribution
883641; dist.manager@brixworthbulletin.co.uk

Sheila Jenner, treasurer
881173; treasurer@brixworthbulletin.co.uk

Regular correspondents:

Jennifer Fitzgerald

Mike Philpott

Kate Calnan

Brian Webster

Letters to: The Old School, Manor Road, Hanging Houghton NN6 9ES; or post them in our letterbox at the Community Centre.

The Brixworth Bulletin is published quarterly in March, June, September and December. The deadline for contributions and advertising for the March 2016 issue is 25 January 2017.

Visit www.brixworthbulletin.co.uk, join us on Facebook or follow @BrixBulletin on Twitter.

assist planners greatly now that the Examiner has approved the protected views and Local Green Spaces.

Protection of the Conservation Area and important views were largely the work of Paula Jones building on the earlier Village Design Statement she had helped to produce.

Meetings were conducted in great spirit, whether chaired by David Parnaby or Vice Chairman Bob Chattaway. The advice received from professionals especially Nigel Ozier and Bob Keith was very important in developing a coherent plan.

Brixworth will have had 16% growth

THE BREADLINE

of Brixworth Ltd

Freshly made hot & cold rolls

Baguettes ● Wraps ● Sandwiches

Jacket Potatoes with a variety of delicious fillings

Beef Burgers ● Hot Savoury Pastries ● Plated Breakfasts

Cakes, Snacks & Drinks ● Toasted Ciabattas & Paninis

Salads ● Fresh Bread

Breadline Vans serving local businesses

Need a business Lunch? We could supply & deliver to you

Visit the shop and meet our friendly staff at:

105b Northampton Road, Brixworth NN6 9DX

Mon - Fri 7 am - 4.00 pm; Sat. 7 am - 3.30 pm

Phone orders taken on

01604 882533 or email sales@breadbrix.co.uk

Card payments accepted
www.thebreadline.co.uk

since April 2011 once phase 2 of the Saxon Heights development is finished. 'Windfall sites' – sites where change of use or similar allow for opportunistic infill developments inside the village boundary – accounted for over 100 further new homes between 2000 and 2011. If this is repeated between now and 2029 the village will have grown around 20% since April 2011, and that's without any new housing estates being approved.

With that in mind, a key aim of the Neighbourhood Plan is to minimise further unpopular intrusion into the countryside following the enormous expansion of the village from 1975-2000.

More recently, a team consisting of Mike Parsons, Mike Nice and Bob Chattaway, working varyingly with Daventry District Council leader (and Brixworth resident) Chris Millar and DDC planners Tom James and Jane Parry, has been heavily involved in securing village benefits from developers, such as a new village surgery, an extension to the primary school, more parking at the library and £180,000 for sports facilities.

"I really appreciate the huge effort everybody has put in who has participated in the Group meetings as well as those who have undertaken specific tasks," says Bob Chattaway.

Parish Council ordered to pay Pointer £18k damages

Cost hearing still to come

Brixworth Parish Council has been ordered to pay former councillor Stephen Pointer £18,000 worth of damages. The judge in the employment tribunal brought by Pointer found that the Parish Council had failed to make a Reasonable Adjustment for Pointer's disability, and had harassed the claimant on three occasions.

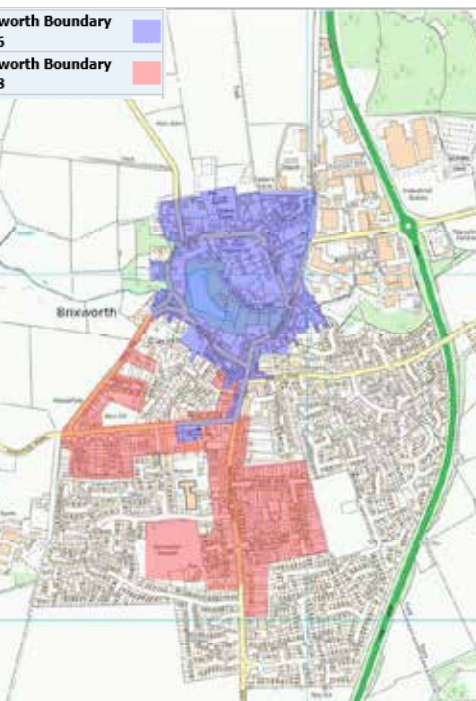


Pointer had asked the Parish Council for an iPad to allow him to read Council paperwork. When the Parish Council resolved to provide the iPad but later sought to attach additional conditions, Pointer sued.

The judge at Bedford Employment Tribunal agreed that the Parish Council had failed in its obligation to provide Pointer with the means to carry out his role. He further found that the Parish Council had harassed Pointer, firstly by revealing in public that it was he who had sued the Council, secondly by deferring to resolve the dispute ahead of the trial, and thirdly by refusing to accept Pointer's apologies for absence from a Council meeting.

He awarded Pointer £15,000 for injury to feelings and £3,000 in punitive damages, plus interest. He also recommended diversity and equality training for the current clerk and chairman.

The costs in the case are due be decided in a further hearing on 21 December. – cfw



It's worth knowing that the Brixworth Neighbourhood Plan is a masterclass in harnessing volunteer effort. That, together with some grant support, means that producing the plan cost the Parish Council a trifling £1,250 for leaflets, documents and publicity. Government grants of £12,000 paid for the professional landscape consultants (Lockhart Garratt) and Bob Keith's work as professional adviser. This is a very modest sum in comparison to other large villages, which have spent well over £20,000.

CHAMBERS

High Class Family Butchers



Christmas Fare

Fresh locally reared Free Range Turkeys
Free Range Geese
Top Quality Beef & Lamb
Free Range Pork
Home Cooked Pork Pies

Christmas Specials
Meat Hampers



105 Northampton Road, Brixworth
01604 880226

Police report

Daventry Rural North Safer Community Team have over the last few months looked at ways to increase the liaison with our Neighbourhood Watch (NHW) co-ordinators. We have taken the back to basics approach by letting our co-ordinators know "Today's crime TODAY".

If there is anything to report, this allows them to filter the information we give them and then alert all their members as to what is happening day by day. This assists both the police and public in many ways. It allows us, the police to be able to gather information quickly from responses to these alerts, sometimes within hours of an incident or crime occurring, and it allows members of the Neighbourhood Watch to advise their communities about the current crime trends and promote security devices to assist in deterring crimes of that nature.

We have found that since this trial began, we have gained a closer working partnership between the local policing team and the villages we Police. By supporting each other in the fight against crime, it has shown that close communication is key. This can only get stronger if more of the community join and support their neighbourhood watch schemes. www.ourwatch.org.uk can direct you to your nearest co-ordinator or make contact with your Safer Community Team. - *PC Hutchings*

Join the Neighbourhood Watch

To find out more about Neighbourhood Watch in our area, go to the Northamptonshire NHW web site: <http://www.northamptonshireneighbourhoodwatch.co.uk/>

You will see a web page with a Line: 'Your Local Area' and a search box where you can enter your post code. You will then be directed to local NHW sites and from there you can click on a NHW group.

If you want to join a scheme there is a green button at the top right of the web page

on which you can click; it will open up a registration process for you to complete.

If you want to send an enquiry message to the NHW group co-ordinator you can use the 'send a message' button that is on the lower right of the opened NHW Group web page (under heading 'What you can do').

Alternatively, anyone in Daventry area who is interested in NHW should contact the Daventry Area NHW Support Team Chairman Andrew Crisp on andycrisp@btinternet.com.

Fish Bar burglars make off with staff tips

A break in at Brixworth Fish Bar in the early hours of 20 October saw five burglars cause a great deal of mess though fortunately they did not steal much of great value other than the staff tip jar.

The burglars – five young men – broke into the premises around 3.20am. They were captured on the fish shop's CCTV cameras but unfortunately not recognisable to the police. The shop's owner, My Ly, arrived on the scene around 10 am. He says the thieves had made off with cans of coke, frozen sausages and fishcakes, baked beans, sauces, two cases of sugar and two new toasters. The most distressing loss was the theft of the staff's tip jar with five months' of tips in it. One of these tip boxes was later found discarded outside the Lamport Swan pub, suggesting the burglars might have come from North Northamptonshire.

Police are grateful for any information that might lead to the arrest of those responsible. – *cfw*

Speedwatch shows big problem at Saxon Rise

Location	2016	2015
Northampton Road (Saxon Rise)	137	
Northampton Road (Saxon Heights and mini roundabout)	53	49
Holcot Road	21	33
Harborough Road	15	12
Station Road	5	18
Spratton Road	2	2

The 2016 Speedwatch campaign, which took place in September and October, confirmed local residents' fears that Brixworth has a major speeding issue at the Saxon Rise housing development on Northampton Road.

More than half the cars caught speeding in the village were clocked near the Saxon Rise development – 137 in total. This brings the total number of cars caught on Northampton Road to 190, a worrying comparison with the previous year's 49. However, it should be noted that previously, the speed was only measured at two locations further inside the village, where this year's total comes to 53.

Overall, the 2016 campaign found 233 cars to be speeding, compared with 114 in 2015. Station Road, which had been a speeding hotspot two years ago, dropped down the priority list; the reduction is thought to be the result of improved signage, brought in on the back of the 2014 Speedwatch.

Most cars were caught speeding in the mornings (170 compared with 63 in the evenings). In 2015, there were 66 speeding in the morning and 48 in the evening. We look forward to running the Speedwatch campaign again 2017. If you are concerned about speeding and interested in volunteering, contact Howard Reader on howardreader157@btinternet.com.

- *Howard Reader*



applying technology to security

- ✦ Intruder Alarms
- ✦ CCTV
- ✦ Fire Alarms
- ✦ Access Control
- ✦ Intercoms
- ✦ Monitored Systems

Alarm Installation & Maintenance

Commercial & Domestic

Insurance Company Approved

Brix Secure Ltd
www.brixsecure.co.uk

01604 882456
jason@brixsecure.co.uk



Walkers face loss of popular footpath

The field to the west of Northampton Road, backing on to the houses on Shelleycotes Road and Froxhill Crescent, has been popular with local walkers and dog lovers for many years, thanks to the permissive access that allows people to walk around the edges of the field.

Unfortunately that is set to come to an end with effect from February 2017 because the scheme under which the farmers were paid to provide access has run out. This means that from 1 February, access to the permissive path will cease and the field verges will be off limits to ramblers and dog walkers alike.



Turney says that he is going to be seeking funding for a new government scheme which may involve new permissive access being established. However, any new scheme is not expected to come into effect until 2018 and any permissive access is likely to be on different fields. This is because the ultimate decision whether to grant permissive access rests with the land's owner, in this case the Bristol-based Society of Merchant Venturers (SMV).

For years, SMV has sought to obtain planning permission for a new housing estate on the land. While these attempts have so far been unsuccessful and there don't appear to be any immediate plans to make another approach, it is widely expected that another planning application will be submitted eventually. Having permissive access around that field would only complicate matters, Turney says. – cfw

The Turney family, who farm the field as part of Brixworth Farming Company, had granted permissive access to the field under the Environmental Stewardship scheme. The government-funded scheme paid farmers for environmental improvements including providing access like this. However the scheme has now been shut down with no direct replacement, and as a result the Turneys have decided to revoke access to their field.

“Come February we will be closing down access and turning the edges of the field back into a conservation area,” says Richard Turney. “Anyone who still walks around that field thereafter will technically be trespassing.”

People using the path have been dismayed at the news. “The field is a valuable resource for walkers and dog owners alike. It has been enjoyed by many Brixworth residents over many years even before a permitted footpath was established,” says Keith Howell, who lives near the field.

The six reasons to **choose O’Riordan Bond to sell your home in Brixworth in 2016:**

One

We are local and understand Brixworth

O’Riordan Bond is the only estate agent with an office in Brixworth – a local office with local knowledge. Each May - June instruction will receive a 20% discount on our sole agency fee.

Two

We advertise your home regularly

If you instruct O’Riordan Bond to sell your home your property will be advertised four times in the first eight weeks in the local press. Advertising regularly will help the right person being found for your home in the correct time scales.

Three

We’re open at times to suit you

We’re open at times to suit our clients. 8.30am to 6pm Monday to Friday, Saturdays and Bank Holidays, convenient for viewings after work and at weekends.

Four

Your home will be professionally photographed

Each instruction in Brixworth and the surrounding villages will benefit from FREE PROFESSIONAL PHOTOGRAPHY AND FLOOR PLANS.

Five

We show your property at it's best

We take time and effort to represent every property in the best possible light. On www.oriordanbond.co.uk you will find floorplans, numerous colour photographs, location maps and printable colour brochures for properties.

Six

We get you the best possible price

Being local and focused on selling property in Brixworth and the surrounding villages means choosing O’Riordan Bond Brixworth increases the chances of securing a purchaser at the best possible price.

Please call O’Riordan Bond on 01604 880077



marketing impact - professional service

All Saints' Church Organ Appeal

Since our last article in the Bulletin about our plans to restore the organ at Brixworth All Saints' Church, things have begun to move. We now have permission from the Peterborough Diocese – in church speak 'a faculty' – to go ahead and prepare for the work to take place.

The challenge however, still remains the same, namely to raise the £15,000 needed to pay for the work.

We have already raised £5,000 through pipe sponsorship and a promised donation from the Friends of the Church and I am now writing to ask Bulletin readers to dig deep and help us out in raising the balance.

This may be done in three ways: sponsor a pipe (there are still enough left); attend our fund-raising events planned for the new year and/or encourage your employers to make a contribution to the fund.

In addition, we are approaching charities who offer specific grants to restore organs and we are quietly hopeful of support from them.

So, come on Brixworth, this is a great opportunity to become a part of our village heritage. The organ is not just for hymns and services but is playing a part in the wider community as it is increasingly being used for concerts and other musical events. And if you want a really unusual Christmas gift, why not give an organ pipe?

To become a sponsor, please contact Roger Brown on 880410 or xias@xiassociates.co.uk and he will set things up for you. In addition, look out for our upcoming "Sponsorship Saturdays" at the library.

Finally a big thank you to all those who have already supported us and thank you in advance to those of you who may decide to support us in the future. – Roger Brown, Organ Fund Coordinator



Third Brixworth

The third Brixworth Music Festival was brought to a close on 25th September with a very fitting concert given by the well-known Northamptonshire ensemble, Fiori Musicali. With works ranging from the Middle Ages to the present day, the Brixworth Church of All Saints seemed to be the perfect setting for this last concert, as indeed it did for the other concerts in this year's very varied programme.

The Brixworth Music Festival is still in the early stages of its evolution, but nevertheless seems to be establishing its status. It can boast an extremely high standard of performers, one of the best venues in the country, and a committed team of workers who are determined to make this project work. Audiences have been very appreciative but the church never seems to get full. We have to address this problem, on which our finances and the future of the Festival depend, but we were nevertheless encouraged by the fact that we, with three ambitious festivals, have not yet made a loss, have received nothing but praise, and have managed to secure generous



sponsors who believe in this venture.

Master of the Queen's Music, Judith Weir, who was our special guest last year, described the Festival as "a gem" and I think this is an apt description: in the middle of the Northamptonshire countryside, offering an opportunity to hear classical music once a year with world class performers, the Brixworth Music Festival is on the way to becoming one of the very special classical music festivals in England.

After being rung in by the bell ringers of All Saints' Church, Brixworth, the Festival got under way on the 16th September with two large concerts, both conducted by Graham Tear: a "Best of British" concert with the Northampton Concert Band, followed the next evening by a concert with the Northampton Chamber Orchestra. These two concerts gave the audience a rare opportunity to hear a large ensemble and an orchestra with professional players in a village church.

Music Festival wows audiences



After this impressive start the Festival offered rather more intimate concerts. On the 18th September there followed an Evening of Poetry and Song, with singers Chloe Willson-Thomas, Gwion Thomas and Kay Soteriou, actor Paul Shelley and the John Clare Wind Quintet (which was formed during the first Brixworth Music Festival in 2014). The evening was accompanied by the accomplished pianist Jonathan French.

A piano recital on the 21st September, "Postcards from Russia", was a first for the Brixworth Music Festival. Russian born Oksana King coaxed the church's 100 year old grand piano into new life with an impressive, virtuosic, and well-presented concert of mainly Russian works.

One of the gems of the Festival was the concert given by the Midlands based Tedesca String Quartet on 23rd September, with a programme of Mozart, Dvorak, Shostakovich and Barber, in which baritone Gwion Thomas could be heard once again. This fine quartet deserved a larger audience, even if those present (about 35) were extremely appreciative.

On 24rd September there was another virtuosic solo recital, this time with our special guest from Germany, Irene Urbach, who is Professor of Accordion in Nuremberg. In a concert which lasted 90 minutes without a break, the audience enjoyed a programme of music which ranged from arrangements of Baroque literature to the present day – including a work by Festival co-director, Vivienne Olive. The accordion doesn't enjoy the prestige it receives as a serious instrument in Germany and Irene Urbach was able to redress this situation with an unusual and demanding programme which also included lighter music in the form of tangos, arrangements of well-known songs and alpine music.

In celebration of the Festival there were two church services on Sunday the 25th September. During the sung Eucharist in the morning there was the opportunity of hearing the Brixworth Songsters and before the final glorious concert with Fiori Musicali there was a Festal Evensong. All in all a very memorable and successful third Brixworth Music Festival. – Vivienne Olive

*Open 9.30am – 3.30pm Tuesdays and Thursdays
and weekends by appointment*



second hand
designer curtain and blind
exchange shop

• also selling cards, candles and cushions from local designers •

THE WILDERNESS, KELMARSH, NN6 9NA
01858 515020 • bumble@kelmarshcurtains.co.uk

Saxon Rise yields archeological

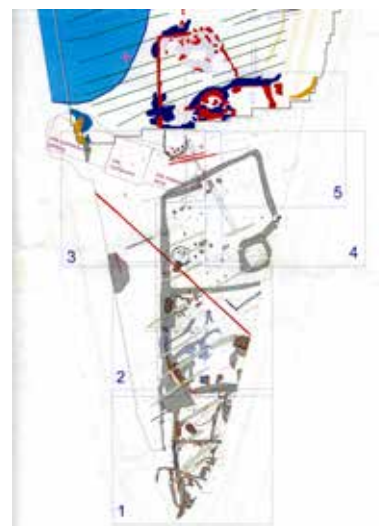
As you may have noticed recently on your way out of the village toward Northampton, there has been a team of archaeologists cataloguing the findings in the Saxon Rise 2 development, which will fill in the land between the Phase 1 development and the A508 roundabout.



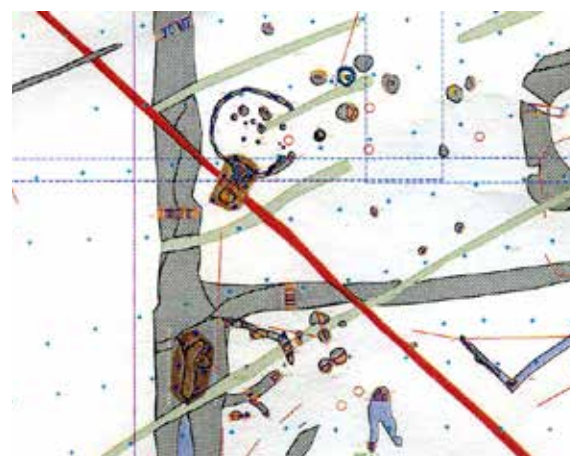
The land on the eastern side of the bypass was examined by an archaeological team from Leicester University prior to the construction of the bypass, but the land between the bypass and Northampton Road was left as agricultural land until it was sold for housing development.

The team from Cotswold Archaeology (CA), who were analysing the site, have discovered that the land has probably been in use since the Bronze Age and there were signs of habitation through the Iron Age and into Roman Times.

The only service that was found in the field was a water pipe, probably installed in the last century. As there were no records of what was beneath the surface, the water pipe went diagonally across the field, seen in the plan below as the red line traversing from south east to north west.



In the highlighted detail plan at the bottom of the page, it can be seen that the pipe passes through an area of interest to the CA staff. This was a Corn Drier, which as its name implies was used to dry corn, wheat and other cereals prior to storage. A number of pits have been excavated around the site, some of which would have been used to store the grain. The corn driers have a T shape with the long arm of the T where the fire was contained and the side arms would be where the grain was to be dried. As can be seen, hopefully,



from the picture, the heat from the fire has discoloured the local ironstone, turning it red. There are also a large number of post holes to the northeast of the arms of the T, which probably indicate

where a dwelling was located.

Another interesting feature is the cistern, which was initially suspected by those who knew no better (ie me) to be a well. The

Can an Osteopath help you?

Osteopaths don't just treat back pain – we can help with pain related to pregnancy, pelvic pain, sports injuries, neck pain, recurrent headaches, joint pain, sciatica and other nerve problems. Patients have also found osteopathy helpful for digestive issues, circulatory problems, neuralgia, sleeping problems amongst many others.

Call now to discuss your symptoms with one of our experienced Osteopaths

BRIXWORTH
OSTEOPATHIC CLINIC
PART OF THE APOLLO HEALTH GROUP



No need to wait. You can be seen within 24 hours. Call now or visit www.brixworthosteopaths.co.uk
Quote BB0316 to receive 10% off your initial consultation

01604 889241 | info@brixworthosteopaths.co.uk

treasures



cistern is lined with stone with a surrounding outer layer of clay. Presumably the water for the cistern was carried up the rise from the stream down by where Raybell's yard now sits.

Sadly all this has now been covered back in to allow for the development of the new housing. - *Ian Topham*



Safely Contained

Self Storage

Secure storage container units for all your **business** and **domestic** needs

Drive up location

7 days a week site access

Flexible, affordable storage solutions

Park Farm, Spratton Road, Brixworth, Northampton, NN6 9DS

info@turneypf.co.uk

Tel: 01604 880 237 07888 833 954

www.safelycontained.co.uk

Wave of support saves Brixworth hens

A brood of chickens on the allotments at Brixworth has been saved, following a campaign started on Facebook.

Gary Spratt and his family had been keeping chickens on their allotment on Northampton Road for many years but the arrival of new neighbours in the Saxon Rise housing development threatened to spell the end of the road for the chickens.

A neighbour who'd moved into one of the recently-constructed houses contacted Environmental Health with concerns about the chickens as well as the cockerel, whose crack-of-dawn crowing was causing a nuisance. When measures to limit the noise did not work, Spratt and his family feared they would have to re-home all the animals.



Frustrated, he vented his misgivings on Facebook.

What he had not counted on was the huge and supportive response he would get as scores of people from the village spoke up in support. Within hours, a petition to Save the Brixworth Hens was doing the rounds in the village, a Facebook Group was born and received several hundred likes, and discussions were raging on the benefits of village life.

Two days later, Environmental Health officers paid an early-morning visit to the allotment. Following the visit, Spratt was told his chickens could stay.

Whether the outpouring of support had anything to do with the decision is hard to say – but there can be no doubt that Spratt, his grandchildren and particularly the chickens were very pleased with the outcome. – cfw

computer doctors



- Laptop Screens Replaced
- Windows Not Starting
- Wireless Network Setup

- Virus and Malware Removal
- Replacement Laptop PSU
- While You Wait Repairs

Fixed Price Workshop Repairs & Onsite Service

Tel 01604 411444

www.computerdoctors.co.uk

Country Eye

Give us this day.....

Bread – the staff of life so it is said. And despite the arrival of tortillas, noodles, pastas, and wraps of many kinds, the humble loaf still finds its place on the tables of a majority of homes; those which still have tables, that is. But it is a sad fact that it is bread that has been degraded, mutilated, and adulterated by a combination of the supermarkets, the grain barons, and the so-called industrial bakers, so that it is not even a pale shadow of what our daily bread should be. Only its shape resembles that of a traditional loaf, and that needs to be propped up chemically to stop it from collapsing into a shapeless mass.

Even the grain growing in the fields comes to the mill laced with a cocktail of pesticide, herbicide, and artificial fertiliser residues. The milling process takes out most of the nutritious part, so that has to be put back in chemically. All this because industrial bread is produced by a process aimed at cutting down the time the dough mix needs to 'prove' or in other words the wait while natural processes do their work. Even my humble bread machine needs three hours to produce a loaf, while the factories take not much more than an hour. So more bread means more profit.

One of the problems the factory bakers had in the early days was that the short baking time led to the bread being unable to stand unaided; it just collapsed. The solution was to chemically alter the fat to form 'crystals' that helped bread to stand up. But what's all this about fat in a loaf? Not in my loaf. The only ingredients I use are flour,



yeast, salt and water, the same as bakers around the world have used for millennia.

So the question is, where do I send you for good bread, locally produced? If you are looking in Brixworth, then you will look in vain. My son-in-law makes excellent bread for his own and family use, and doubtless there will be some others. But to buy a loaf over the counter, the nearest I know of is Saul's butchers of Spratton, who have a small in-store bakery, and Smith's farm shop of Chapel Brampton, who sell bread from Tee's of Northampton, a long established firm. Also in Northampton you can buy excellent bread from Gardner's of Kingsthorpe, who bake on Mondays, Fridays, and Saturdays; also from The Good Loaf, and there must be others of which I am unaware.

Those of you with bread machines who follow the recipes in the instructions will be invited to add ingredients like skimmed milk powder and cooking oil. They are unnecessary. Here is the recipe I use:

1. 350ml water
2. 1 ¼ teaspoons salt
3. 500 gms strong white bread flour
4. 1 teaspoon easybake bread yeast

It is very important to add the ingredients in the order I have listed them, the reason being that the yeast and salt need to be kept apart during the initial stages. Salt will kill the living yeast cells! All you need then is to press the start button and three hours later you will have a loaf far superior to the supermarket pap. Because it has no preservatives it is best eaten the same day. Best of all while still warm with lashings of salted butter. In the last resort it can be frozen, but is never as good.

It is a sad fact that many folk have never tasted real bread, and I am not surprised to find that those who have eaten nothing but the factory made product find the taste very different. 'Too yeasty' was one comment, and many said they preferred the industrial bread. It seems they have had their taste buds hijacked by big business. So those of us who are trying to encourage a return to traditional bread may face an uphill task. Finally if you really want to give bread made the old-fashioned way a try, go to Market Harborough. There, tucked away behind St. Dionysius' church you will find the Garage Bakery. Their bread is as good as any I have found - today's version of the real thing. – Brian Webster



~The George~





CHRISTMAS BOOKINGS NOW BEING TAKEN
 Festive menu (2 course) from £14.95
 Available 15 Nov - 24 Dec.

CHRISTMAS DAY MENU - bookings available now
 Adults £45 - 4 course; Children £20; under 5s £15
 Open 12.00 - 4.00

NEW YEAR'S EVE - from £16.95
 Bookings & pre-orders only

FOOD OPENING TIMES

Monday	12.00 - 2.30
Tues. to Fri.	12.00 - 2.30; 5.00 - 9.00
Saturday	ALL DAY
Sunday	12.00 - 4.00

Disabled access & toilet; baby changing facilities
 Take-away is available on all our dishes

Brixworth, NN6 9BU 01604 881439
mail@thegeorgeatbrixworth.co.uk
www.thegeorgeatbrixworth.co.uk




Parish Council:

Have your say in what we do next!



Brixworth Parish Council has been preparing a Business Plan, which includes information on what we already do and what we hope to do to support the village and its residents over the next four years.

The Business Plan is available for everyone to examine online at bit.ly/bpc-plan2016

The Parish Council's funding comes from our precept. This is the proportion of the council tax which Daventry District Council collects on behalf of the Parish Council, and for a band D property this figure is currently £64.01 per year (£1.23 per week).

Some of the projects and improvements in the Business Plan are already part of the Parish Council's budget. However, some of them will be quite expensive, and we want to find out how you feel about these projects before we ask you to pay more for them.

For example, if you look at the Aspirations section of the Business Plan, you will see projects such as purchasing illuminated speed warning signs, which have an estimated cost of around £2,500, and accumulating funds to hold a village festival in 2020, for which we will allocate £5,000 per year.

We would also like to introduce a dedicated PCSO for Brixworth and a Dog Warden and whilst there is no certainty that we could achieve these, we would like to start planning for them so we are ready if the opportunity becomes available.

Of course, costs are increasing, and the precept will rise slightly without any of these additions. However, the aspirations will require an increase to the precept of about 18%. For a band D property, this represents an estimated rise of 24p per week, or £12.16 per year.

We strongly believe that the aspirations in the Business Plan will enhance our community, and we want to ensure that you are part of the decision. Please let us know what you think.

- You can email the Clerk to the Parish Council, Mrs Emma Baker: clerk@brixworthpc.org.uk
- You can comment on our Facebook page: www.facebook.com/brixworthpc
- You can drop in on one of our Parish Council surgeries. These are usually held on the first Saturday of the month, from 10am

until noon at the Library & Community Centre on Spratton Road.

We really do want to hear your opinion. This is our future together.
- Brixworth Parish Council



~The George~



We have ample facilities to hold various functions. You can use our conservatory area or smaller rooms for your private parties. We can accommodate baby showers, christenings, funeral receptions and birthdays, catering for any size groups. We have a small snug room to provide a private meeting area for local businesses.

Live music played on the first saturday of each month

sky SPORTS **Four large split screens** **BT Sport**
showing Sky & BT Sports

BBQs, Bike clubs, Darts, Pool, Fundays, Charity events

f Follow us on Facebook to see all updates f

Brixworth, NN6 9BU 01604 881439
mail@thegeorgeatbrixworth.co.uk
www.thegeorgeatbrixworth.co.uk

Country Park News

We've had a great summer at the country park, with many organisations, charities and families holding their fundraising events here. With Anglian Water's all-weather cycle track circumnavigating the 7.4 mile route around the reservoir, it's a great spot for triathlon training or sponsored cycle rides. Closely situated to the track, our Event Meadow is available for hire as your event base/ start/finish area.

If you are interested in using the reservoir track for your fundraiser, contact the Pitsford Water Ranger Team on 01604 781350. To hire the meadow at the country park contact the Countryside Rangers on 0300 126 5932

Throughout the summer and autumn we've also had a great time entertaining and

educating families at our ranger-led activities. With pond dipping, mini-beast hunts and guided bat walks, we have enjoyed meeting our visitors and passing on our enthusiasm for our countryside and wildlife.



Often these activities are advertised on our Facebook page, and the new Country Parks Northamptonshire website; you can also be added to a mailing list to receive regular updates for all six country parks within our service.

If you would like to be added to the mailing list, just send an email to countryside@firstforwelling.co.uk, with "mailing list" in the subject line.

As well as these smaller, local activities this year we have played host to a few larger events. First of all was the fantastic "Rockin' The Park" family music event, in memory of David Reger; showcasing well known artists and local bands, there was something for everyone. We would like to thank the organisers Dean and Phil for doing such a superb job of organizing and promoting the event which brought visitors from near and far.

Twenty Million Steps (x2) returned for the third year to promote walking as a simple, easy, accessible way to improve the health and wellbeing of the county's residents. Started as a mass participation campaign to highlight the claim that Northamptonshire was the 5th fattest county in the country, it has developed and grown into a showcase for the many opportunities to improve wellbeing through walking. Visit www.northamptonshire.gov.uk/walking to learn more about local walking routes, groups and scenic spots.

Last month we also played host to the 2nd annual Northamptonshire Day event, organized by BBC Radio Northampton as a showcase for the people, places, products and produce of the county. With food, drinks and crafts on show, opportunities to take part in sports and science activities, hear up and coming local musicians and enjoy a beautiful autumnal day at the park, it was a great day out had by all.

Brampton Valley Way News

Many of you will have made use of the Boughton Car Park (opposite the Windhover PH) to start your walk along the way. You may have also been unlucky to have witnessed the household and DIY waste that has been illegally dumped there. We take this sort of incident seriously and make every effort to have it cleared by waste removal specialists in good time. We are always very grateful to our visitors for letting us know about these sorts of incidents; with only one ranger to patrol and maintain the 14 mile track, we can't be everywhere at once!

With your help we can try to eliminate or reduce this kind of hazardous activity, please call us on 0300 126 5932 if you find any illegal waste. If you witness this kind of activity taking place call Northants Police on 101, we can work with their Rural Crime officers to reduce these incidents happening and ruining our countryside.

Country Parks Northamptonshire

Earlier this year we reported on the Countryside Service's move into the First

HC
one of a kind

www.hc-one.co.uk

Pytchley Court Care Home

Providing a high standard of care in Brixworth village

Pytchley Court Care Home offers elderly ladies and gentlemen personalised care and support in the heart of the community



At Pytchley Court kindness is at the heart of everything we do. Our care and services are tailored to individual preferences including food, hobbies and interests. You are welcome to visit Pytchley Court at any time and a colleague will be happy to show you around.

- Residential Dementia Care
- Nursing Care
- Residential Care
- End of Life Care
- Palliative Care

For more information, please contact The Care Line team
T: 0333 999 8604
E: careline@hc-one.co.uk

accountability | involvement | partnership

PRIZE DRAW

Afternoon Tea for Two

Complete a Brixworth Country Park Visitor Survey throughout the month of November to enter into our prize draw for a free afternoon refreshment from the Willow Tree Café



for Wellbeing CIC. As part of this move, we have been rebranding the country parks website to give us a fresh identity. We have a new website www.northamptonshireparks.com where you can learn about volunteering opportunities, events, the countryside rangers, competitions and projects taking place at each park. It also links in with our social media pages on Facebook, Twitter and Instagram. So don't forget to tag us when you post about your visits to the parks.

Volunteering at Brixworth & Brampton

As we move into the winter months, we will once again return to our conservation management tasks to improve the diversity of the sites for our local wildlife. We work on thinning and coppicing woodlands as well as preparing meadows for the spring and maintaining park structures and furniture.

If you are interested in giving back, and would like to help we run the following public volunteer days:

- Brixworth Country Park – 3rd Saturday of each month; 10am-4pm
- Brampton Valley Way – Thursdays every week; 10am-4pm

We also have opportunities throughout the year for volunteers to help with our family activities, event management, admin and horticultural tasks. For more information email us at brixworth@firstforwellbeing.co.uk or visit www.northamptonshire.gov.uk/getinvolved

Winter Xplorer

Xplorer is a fun, family friendly introduction

into orienteering. Brought to us by British Orienteering, with a unique route every time and changeable markers, it makes this activity fresh and exciting every time.

The next Xplorer challenge will take place on Wednesday 21st December, and will run between 11am and 3pm (last admission 2pm). There is no charge, but a minimum donation of 50p is suggested, this goes back into our events budget to enable us to offer more events in the future.

Details of this activity will be advertised on our Facebook page @BrixworthCountryPark and on Twitter @BXCPBVW

November's "Tea for Two" Prize Draw

We need your thoughts, opinions, and suggestions for the country park; they feed into our annual action plan to make the park the best place possible for

everyone.

Throughout the month of November we are offering 3 x "Tea for Two" prizes at The Willow Tree Café – see poster for more information or pop down to the park to learn more! – *Debbie Samwell, Chief Country Park Ranger*

Help wanted!

Are you interested in journalism? Want to know what's going on in your community? Have an interest in graphic design? A love for layout? A penchant for photography? Want to be part of a village organization that people genuinely appreciate?

If your answer to any of the above is yes – have you considered joining the Bulletin?

The magazine you're reading is a labour of love by a team of volunteers who brainstorm, research and write stories, take photos, sell and designing the adverts, lay out the pages, proofread the finished product, get it all to print and deliver it.

Much as we love what we do, it would be great to have some fresh pairs of hands. Some of us have been involved for many years. Others expect to move out of the area at some point. So, long story short, we could use your help.

As a writer, it's a license to be nosy, to make contacts and ask a lot of questions. Other roles include graphic design, layout, sales, invoicing, distribution etc.

Helping out with a village magazine can even be a first step towards a new career. Employers love seeing practical experience and references. Interested? Then I'm looking forward to hearing from you. Contact editor@brixworthbulletin.co.uk or call 882567 (evenings and weekends) - cfw

Management Centre

Moulton
THE VENUE

Moulton College has a highly skilled Hotel Services team that is able to offer a wide range of catering and accommodation solutions for your event.

The Management Centre has been tastefully converted from former farm buildings and accommodation.

There is a wide range of rooms available, accommodating up to 50 in theatre style, to small meeting rooms for 12. Most rooms have built in data projectors. Televisions, DVD, flip charts and overhead projectors are all available. Catering is prepared and served by our own staff, enabling us to provide a wide range of buffets. Vegetarian and special diets are easily accommodated.

To discuss any aspect of these facilities please email: thevenue@moulton.ac.uk

Or contact one of our Hotel Services Managers on: 01604 491131

Moulton College, Gate 4, Pitsford Road, Moulton, Northampton, NN3 7QL

thevenue.moulton.ac.uk

Search for us on: www.venuefinder.com



Brixworth man named Solicitor of the Year

Kevin Rogers – Brixworth resident, partner and chairman of local employer Wilson Browne Solicitors – was awarded the Northants Law Society Solicitor of the Year Award for 2016.

Kevin says: "Wilson Browne is a large county practice, employing approximately 130 staff across offices in Northampton, Kettering, Wellingborough, Higham & Leicester. I was delighted to receive the

village."

The Chief Executive of the Northamptonshire Enterprise Partnership, Jo Lappin, said: "Kevin has been exemplary in working with Guilsborough School to show young people the opportunities available to them in the economy, if they make informed decisions and get the right results."

Kevin added: "I have been humbled by the award, which I could not have achieved

without the support of my wife Rachel, and I hope that I can use it to continue to attract publicity to the Enterprise Advisers Role (for all schools) as well as the



Kevin (right), receiving his award from Edward St. John Smyth (President, Northamptonshire Law Society) & Ika Castka of Wilson Browne

honour of Solicitor of the Year for 2016 recently, and am keeping my fingers crossed for next month's SME Awards, where our commitment to our own staff has seen us shortlisted in the training category".

Kevin moved to the village in 2003, after he relocated with his wife Rachel from London. He continues: "Our eldest goes to Brixworth Primary. We love the village, and use local services and shops as much as we can, you cannot beat the friendliness, convenience and overall great service in the

Chamber of Commerce to continue to support local businesses."

He continued: "This award reflects my hope that our school pupils can realise that there are choices, and also that things will work out so those that don't want to decide everything quite just yet don't have to."

If anyone wants any information about Enterprise Advisers or getting into the legal profession, you can contact Kevin on krogers@wilsonbrowne.co.uk.

First Responders grow and grow

Well here we are again coming towards the end of another year, and what a year it has been for the Brixworth First Responders...

We are delighted to boast an excellent group of dedicated volunteers who have put themselves through intense training to work in conjunction with East Midlands Ambulance Service to respond to life-threatening conditions and incidents, activated when 999 has been called – these volunteers, with equipment purchased through local fundraising activities bring life-saving skills and equipment to the local area to provide emergency care to YOU our neighbours.

We are fortunate to have nine active responders on the team, plus three currently inactive and two new members awaiting their training. We currently run three kits and are in the process of purchasing our fourth. We are really excited that some of the team will be providing night cover as we strive to achieve our goal of providing 24 hour cover to YOU, our local community.

This fourth kit will be named "the 'Viv Leeming' memorial kit". The sad and untimely passing of Viv resulted in the family requesting that donations be made to Brixworth First Responder group which has meant that we have been able to purchase this additional kit, and we intend to make excellent use of the equipment in her memory. We indeed thank everyone who supported these donations and we will do all we can to ensure her name lives on.

We are also pleased to be supporting the formation of the Spratton First Responder group, so if you are reading this from your homes in or near Spratton, we are encouraging and welcoming extra volunteers.

As it is winter, spend a moment considering neighbours who may be old and/or immobile, make sure they are warm, safe and know where help is available if they need it.

Have a wonderful Christmas and New Year, and may we offer a huge thanks to each and every one of our volunteers and supporters.

– Ashley Fenn

Blason's Garage Established 1920

AT THE HUB OF THE VILLAGE

- Fuel
- Service
- Repairs
- MOT

Classic cars welcome

Open Mondays - Saturdays

Northampton Rd. Brixworth

Tel: 01604 880229



T&T ROOFING

- Built-up flat roofing systems
- Re-slating & re-tiling
- Guttering & lead work
- Storm damage & emergency repairs
- Extensions & loft conversions
- General house repairs and building work

Local personal service, based in Brixworth



01604 889447
07855 051198
07851 726812

Meet Andy, the new pastor of BCF



Andy Lloyd-Williams, the new pastor of Brixworth Christian Fellowship, has finally succeeded in moving into the village after a long search for a home. Andy accepted his position at the end of January and started his role on 1st April. He is joined by his wife Hazel and two children Summer and Lucas, aged 7 and 6, who are now well settled into Brixworth Primary School.

Andy's arrival follows Phil Walter's move to a position at national level within the Fellowship of Independent Evangelical Churches. As Andy hails from Market Harborough, Phil and Andy already knew each other before. However, Andy had to get through a good number of meetings with BCF members before being approved!

Andy appears well suited to his new position, having already spent eight years working in other churches and focusing on developing community. He feels the job fits his personality well as he enjoys working

with people – his past experience includes sales – and the variety of work being a pastor brings. "No two weeks are the same", he says.

His first impressions of Brixworth? "Everyone has been very friendly," he answers, "and they are showing a good sense of humour with me being a Leicester City fan!"

And the challenges he faces? Andy emphasizes: "I see this very much as a season of getting to know people and building relationships. The particular needs to be addressed will arise in due course."

Andy wants the church to be seen as relevant and accessible for all generations, to be exciting and to encourage faith. He believes Brixworth Christian Fellowship is very vibrant already. He thinks it is essential that the church continues to play a central role in the community eg through BCF's Mums and Tots group, the Olive Branch café, school and family activities.

Andy says: "It's important for the church to show the unconditional love of God by being there for people and supporting them where

needed." Practical ways in which BCF does this include directing people to resources at BCF's "HQ" in the Community Centre, for example, the Information Desk.

Andy is looking forward to building on the good relationship established between BCF and All Saints church and to finding more avenues to work together such as the Harvest Festival at the school and celebrating Remembrance Day.

Andy came to faith himself in his late 20s although he did not come from a church background. He discovered that his faith transformed his life and says he realizes that, "Every day I can be used by God."

He is delighted to find such a high level of interest in sports in Brixworth as he enjoys soccer and netball and is an FA qualified coach. He has also been involved in sports ministry in the past. He likes to keep fit by cycling and a few years ago undertook a triathlon.

Asked if it is likely that the members of BCF will experience a change in direction, Andy replies that while he and Phil very much see things the same way, of course, they have different personalities. He hopes it will only take a little time for folk to get used to the change. – Jennifer Fitzgerald

ACTIVE
Personal Training
Fitness Consultant, Sports Therapy
Pilates Instructor

Try a personal trainer or join one of our fitness classes in Brixworth

DAY	CLASS	VENUE	TIME
Monday	Circuits	Village Hall	7.00 - 8.00
Weds.	Pilates	The Centre	6.15 - 7.00

Classes are for all levels of fitness

Tel: 01604 743361 / 07732 165546
e-mail: alicoooperfitness@gmail.com

Host your birthday parties at Moulton College

The Barn

The Loft

The Chris Alderson-Smith Annexe

4 hours for £60!

Catering packages available from £3 per child

Check out our 360° images on this website:
www.venuefinder.com/venues/moulton_college/v3493

Moulton
THE VENUE

Contact us by email at: thevenue@moulton.ac.uk
Tel: 01604 491131 ext 5010
Gate 1, Moulton College, Pitsford Road,
Moulton, Northampton NN3 7SY

Ian Chadwick 1963-2016

Ian Chadwick, who passed away in July, had lived in Brixworth for 25 years.

He was born in Northampton and in his youth a talented athlete, especially sprinting and hurdles though he also threw the shot, javelin and discus. He also played football for Kings Heath and Nene Valley Rangers. He was also a keen Cobblers supporter.

Most of his working life was spent at Robert Horne until he became ill.

Ian played an active role in village life, always willing to help out with local events. He was a Parish Councillor for eight years and also a member of Brixworth Conservatives.

The Northamptonshire flag that you can sometimes see flying outside the library was co-designed by Ian after a competition held by the County Council in 2014 and he was very proud of that.

Ian planned his own funeral, which was held at the Church in August, and was well attended.

Ian was very much an Englishman and a gentleman and will be deeply missed by his wife Christine and daughters Lizzie and Emma, and everyone who knew him.

— Christine Chadwick



Brixworth Landscaping

For personal service & creation of your ideal garden, contact Matthew Cox:

Phone: 01604 882390

Email: 82matthewc@gmail.com

Mobile: 07702 317828

82 Froxhill Crescent
Brixworth
Northampton NN6 9LN



More of Kelmarsh Hall

Next year promises to be a very exciting year for Kelmarsh, when its Grade I listed Hall and Grade II listed gardens will be able to offer more amenities to the public than ever before.

Take a peek 'below stairs'

Until now, only the main living area of the house has been open to visitors. Having secured a £1.3 million grant from the Heritage Lottery Fund, the Kelmarsh Trust is now opening up "below stairs" and the former stable yard. This has led to some fascinating historical and archaeological finds.



The Butler's Pantry at Kelmarsh

In future, visitors will be able to immerse themselves in the full sensory experience of the working environment and living quarters of the many servants who worked here. This endeavor is very much on trend with the renewed interest in social history stimulated by the "Downton Abbey effect". Renovations have uncovered a butler's pantry (complete with silverware drawer), a bakehouse, footman's room, an extensive wine cellar and a tunnel leading to wet and dry laundries. In a next stage, the bedrooms upstairs will be restored.

Link to Brixworth

Kelmarsh enjoys a special link to Brixworth as it houses the only remnant of Brixworth Hall. An eighteenth-century orangery from the Hall grounds, faced with rare white Kingsthorpe stone, was transferred here piece by piece

when the Hall was demolished in 1954. Since the completion of its restoration in 2014, the orangery has been providing an attractive venue for small gatherings which can enjoy the views it offers across the fields towards St Denys church. If you're interested, contact Charlotte Coleman on 686543 or enquiries@kelmarsh.com.

There may be other links between our two communities. The archivists seeking to bring to life Kelmarsh's future exhibitions have no idea how many people have worked here. So, if you know of anyone who has a connection to Kelmarsh's past, they would love to hear from you!

History of the Estate

Kelmarsh comprises an agricultural estate of three and a half thousand acres and is home to a rare breed of white British cattle. Communities have lived here since Anglo-Saxon

times and two manors in the area are listed in the Domesday Book. The current brick house was built in 1732 by Francis Smith of Warwick to a design by the architect James Gibbs (who built St Martin-in-the-Fields in Trafalgar Square).

It has been home to several different families. The defining influence upon the way the house and gardens look now was undoubtedly Nancy Lancaster. She was responsible for restoring them to their



The servant's stairs

to open to visitors

former grandeur during two periods of living here, with her first husband Ronald Tree who leased the house in the 1920s, and again in the 1940s, after she had subsequently married Colonel Lancaster. Nancy Lancaster was a co-founder of the design company Colefax and Fowler who were credited with creating the English Country House style. Her unique stamp on Kelmarsh included bringing in nineteenth-century hand-painted Chinese wallpaper, decorating the Hall in pink, and transforming the gardens in collaboration with the renowned society gardeners Norah Lindsay and Geoffrey Jellicoe. Her tradition of always having fresh cut flowers on display is maintained to this day.

Commercial activities

Although the Trust runs a number of commercial activities, including seven tenant farms and venue hire, it has charitable status. Its last occupant, Miss Cicely Lancaster, set up the Kelmarsh Trust in 1982 to ensure the future management and conservation of the estate, as well as for enjoyment by the public. The Trustees' current aspirations include providing year-round educational facilities and making Kelmarsh a family-friendly attraction through providing activities such as weekend workshops.

The estate costs around £1.2 million a year to run. The additional costs for the restoration are estimated at £1.7 million. Fundraising is therefore one of the Trust's key activities. This provides some context to the decision taken by the previous Trustees to erect a windfarm. As windfarm schemes are obliged to demonstrate some benefit to the local community, income generated by the turbines has so far supported local cricket clubs, youth clubs and village halls.

Volunteer work

The trust also needs volunteers to work with its ten full and part-time staff, for example by giving guided tours, stewarding the rooms, looking after the collections, gardening under the supervision of the Head Gardener, undertaking research, and giving outreach talks. If you're interested, please contact Kate Groome at the Kelmarsh Trust via enquiries@kelmarsh.com or 686 543. You don't need any special skills or experience as a full induction is provided for volunteers.

What's on

Kelmarsh is now closed but will open again on 2nd April. However a number of public events are planned over the winter months:

- Heritage Restoration and "Have a Go" days when the public can learn about the



restoration works being carried out and join in restoration activities – taking place on 14th December, 25th January and 1st March

- 1st November - when the Hall will be lit up in purple in aid of pancreatic cancer
- 5th March – the Spring Walk when the gardens will be open for the public to see early spring flowers.

In spring, the House will re-open on Tuesday afternoons, the first Sunday of the

month, and Bank Holiday Mondays. The gardens only will open on Thursdays.

Another event to look forward to next year will be an exhibition of McDonald Gill, one of the cartographers who created the large map of the Pytchley Hunt that hangs at Kelmarsh.

See the "What's On" page on Kelmarsh's website for more information
www.kelmarsh.com/VisitUs/WhatsOn.aspx
– Jennifer Fitzgerald

Social Centre

Moulton

THE VENUE

The College Social Centre is a state-of-the-art, fully licensed facility, comprising the Barn Bar, the Chris Alderson-Smith Dining Suite and the Loft Bar.

The Barn Bar is a large, open plan area accommodating up to 200 people that can be used for a variety of different events, including trade fairs, birthday parties, Christmas parties, Christening receptions, dance classes, group meetings and training events.

The Loft Bar is a smaller, more intimate venue that can be used as part of a larger event or on its own for smaller events.

To discuss any aspect of these facilities please email: thevenue@moulton.ac.uk

Or contact one of our Hotel Services Managers on: 01604 491131

Moulton College, Pitsford Road, Moulton, Northampton, NN3 7SY

thevenue.moulton.ac.uk

Search for us on: www.venuefinder.com

Chris Alderson-Smith Dining Suite	No charge if a full meal is booked
The Barn	£100 per day Friday to Sunday £30 Monday to Thursday evening Additional charges during December
The Loft	£100 per day Friday to Sunday £20 Monday to Thursday evening



Chris Heaton-Harris MP's WESTMINSTER REPORT

What does an MP do?

"What does an MP do?" – It's a question that is so often asked of us as Members of Parliament. The truth is there is much to the job that goes beyond the Chamber of the House of Commons, yet normally this is often the only part of our work that makes it to the news. For myself, some of my time is now spent in my new role as a whip, which means I have to get down to London much earlier on a Monday and am there until the business of the House finishes on a Thursday or Friday.

However, being a MP also means engaging with constituents, taking up your cases where required and fighting your corner in Westminster. It allows me to roam around Daventry doing what I can to help people who ask for it, getting to know what makes the town and the villages tick. When invited, I go into schools and talk to the students and teachers; I visit local businesses to get a feel of how our local economy is performing and I engage with local action groups on various matters, the most recent issues locally being those around planning matters.

On average my office gets around 1000 e-mails a month (interestingly few people send letters any more) on a range of issues. Lots are questions about individual government policies, but the majority tend to be concerning planning matters. In fact I can't think of one village in my constituency that hasn't had an unwanted planning proposal aimed at it in the time I've been your MP. Fortunately now, Daventry has a local plan and communities like Earls Barton have adopted their Neighbourhood Plans; affording them more protection than they've had in a very long time. As you would expect, by far the most important part of a MP's constituency duties is helping constituents and I regularly meet people to discuss their individual cases, such as personal independence payment, employment and housing problems.

School visits are always great fun and I'd like to think I've helped some young people locally understand how Parliament works and perhaps think about whether they could get involved in public service later in their lives.

And having spent 11 years working nights running a wholesale fruit and veg business in New Covent Garden, I'd like to think I am a



big supporter of businesses locally. Recently I had the pleasure of visiting a local roofing and ventilation manufacturer, Hambleside Danelaw, to see its new £4.6m expansion project in advanced manufacturing. It is good to see such businesses having confidence in Daventry and investing to grow here.

If you have an issue that you think I can help with or a business or school you'd like me to visit, please feel free to contact my office.

I look forward to seeing you soon!

Chris

Snail-mail The House of Commons
Westminster
London SW1A 0AA

Telephone 0207-219-7048 or 01604-859721

e-mail chris.heatonharris.mp@parliament.uk

Twitter @chhcalling

BLINDS · AWNINGS · SHUTTERS

Local manufacturers & installers of high quality internal & external blinds

Verticals, Rollers, Venetians, Pleated etc etc

Visit our showroom to see what we can offer; open late on Thursdays

FREE NO OBLIGATION QUOTATIONS



19 Staveley Way, Brixworth, Northampton, NN6 9EU

Telephone: 01604 883744

Email: info@dr-blinds.co.uk

Web: www.dr-blinds.co.uk

K. F. TROOP & SON

Fish, Fruit, Vegetable & Flower Retailers
& Wholesalers to the Catering Trade



6 Hunters Way, Brixworth, NN6 9EL
Tel: 01604 882366; Mobile: 07885 562130

Brix & Mortar

The 'Bricks-worth' Bulletin

With so much talk this year about Brexit and how the Leave/Remain decision would affect the housing market it may have slipped some people's attention that the UK is still 264,000 homes short! Even more interesting is the fact that we haven't got enough of the most basic item required to build a house, the brick.

I read a very interesting blog this week from Matthew Gray, Managing Director of Property Services at Gilson Gray Solicitors. I have taken the main body out of the article and the full version can be seen at <http://gilsongray.co.uk/an-interesting-thought/>

A shortage of brick supply has been a contributing factor in rising house prices over the past decade, as growing demand continues to outstrip availability of housing. Even with willingness from contractors to build homes following Brexit, the UK's construction sector would require a total of 1.4 billion bricks in order to resolve the housing shortage in the UK. This is the equivalent of the total amount which would be needed to build all the houses in Leicestershire, reveals the Bricks Report from National Association of Estate Agents (NAEA), compiled with the Centre for Economics and Business Research (Cebr).

Between 2006 and 2016, the growing UK population triggered exponential growth in demand, and has now outgrown the number of houses being built. Given that in 2016 the average UK home is made up of 5,180 bricks, resolving the housing shortage of 264,000 units would require 1.4 billion bricks.

The 1.4 billion bricks deficit could in theory build several of the UK's famous landmarks several times over, including:

- 740 Big Bens
- 40 Tower Bridges
- 3,090 Manchester Town Halls
- 4,540 Warwick Castles
- 5,830 Conwy Castles

While house prices are impacted by numerous macroeconomic factors, they are fundamentally driven by the supply and demand of housing units. The shortage of homes has led to sharp house price appreciation and prevented many prospective buyers from getting onto the property ladder.

Brick stock steadily declined between 2008 and 2013 and only partially recovered in 2014 and 2015. Two-thirds of small and medium-sized construction businesses faced a two-month wait for new brick orders last year, with almost a quarter waiting for up to four months and one in six (16 per cent) waiting six to eight months. This can partially be explained by the slowdown in building following the recession.

Even though houses are shrinking, we still don't have enough bricks. Over the past 100 years, the size of the average UK home has shrunk significantly. In the 1920s the average dwelling was 153m² and almost 100 years later, in 2016, the average home is approximately half the size at 83m² – meaning homes have shrunk by 46 per cent in the

last century. This is partly a result of the fact families are generally smaller, so require less space – however the decrease can also be explained by financial restrictions. As house prices have risen astronomically – 45% over the past ten years – house buyers have been forced to settle for smaller properties.

Over the last ten years the average UK home has shrunk by nine per cent, or 228 bricks. In 2006, the average UK home was 91 m² in size and required a total of 5,408 bricks. Now, ten years later, as the size of homes have reduced, the average new home requires 5,180 bricks – but there still are not enough to meet demand to fill the housing deficit. – *Stuart Little*



Thinking of buying or selling in Brixworth?

HOMES URGENTLY REQUIRED IN YOUR AREA

call **Stuart**, your local property specialist, on

01604 616886

stuart.little@horts.co.uk

view all our properties online www.horts.co.uk



Your local property consultant

stuart little

Brixworth – a History in 50 Bulletins

Welcome to Part 2 of the run-down of the key events of the last 12 years, as viewed through the pages of the Brixworth Bulletin. I'd thought I'd be able to do this little round up in one issue but there just are too many events to fit in! So, sit back and enjoy the key events from issues 26 – 50. And if you missed the first instalment, you'll find it in issue 50 which is still conveniently online at www.brixworthbulletin.co.uk – along with the other 49 issues mentioned hereafter!

Issue 26, September 2010

The Carnival dominated the front page, with photos of some of the 37 floats and organisers. An estimated 2,000 villagers enjoyed the procession and the party, which included several bands, a Viking group, gymnastics displays, Morris Men and the Youth Club's drama group. Altogether the day raised over £2,000, to be shared between Save the Children and village groups. Bill Lovell, a fixture in the village after over 40 years of running Lovell's Hardware, departed into well-earned retirement. The shop of course remains – Bill sold it to current owner Lee Horton. Over at the Cricket Club, the locals could not quite believe their luck, when the Brixworth Select XI played the World Lashings XI – ex-International Test cricket players to a man – and WON! This was the first time that kind of an upset happened at Brixworth in eight years and unsurprisingly, the visitors demanded a rematch...

Issue 27, December 2010

The second Flower & Produce Show took place in September, boasting another good spread of entries, fantastic prizes, and the Bishop of Brixworth himself awarding the prizes (one of his final engagements before retiring at the end of the year). While the event raised some £2,000 for the church restoration fund, the organising committee called it a day, in the hope that somebody else might take over. Sadly, that hasn't happened to date. Another retiree was Harvey Fox, who after six years of editing the Bulletin handed over the reins to yours truly. This marked the end of an era – the Brixworth Bugle had been founded by Harvey's wife Paddy some 15 years previously and between them they had remained the driving force behind the newsletter for all that time. As government austerity measures were beginning to bite, local councils were having to come to terms with quite considerable funding cuts and these would no doubt have effects on parish finances, Chris Millar, chair of DDC and Brixworth resident, warned. Meanwhile the conversion of the Uplands Building into a Sure Start Centre was almost complete, offering support and activities for pre-school children.

Issue 28, March 2011

The funding cuts signalled by Chris Millar started to materialise, as Northamptonshire County Council moved to make all its country parks self-financing. NCC's 'invest to save' scheme saw significant investment to upgrade facilities at all five country parks, ahead of asking them to cover their own running costs from parking fees, sale of goods and other activities. DDC refused planning permission for a new wind farm at Kelmarsh and for the planned conversion of Mabbutt's wood yard into an industrial park. At the surgery, patients and staff mourned the sudden death of practice nurse Cathy Utley, while the village gained its first petshop – Miller's Pets replaced a boutique on Northampton Road.

Issue 29, June 2011

Plans were submitted for a new housing development to the west of Northampton Road, backing onto Froxhill Crescent. The plans, drawn up by property consultant Carter Jonas, sketched out 150 new houses and a lot of green space but most villagers expected it would only be a (short) matter of time before the green space would disappear again in a second phase of development. A new pressure group, BRANE (Brixworth Residents Against New Estates) was formed to fight the proposal, which was seen as unsustainable. Further in the village, the 34 new houses on the former Rigiflex site were still not completed, and builders were blaming sub-standard work by the initial contractor. But there were also reasons to be cheerful, with several street parties to cheer the wedding of Prince William and Kate Middleton.

Issue 30, September 2011

Plans for two more housing developments in Brixworth emerged, leading to BRANE describing Brixworth as 'a village under siege'. The first, for 14 new homes on the former Mercedes Benz carpark to the back of Eaglehurst, was not overly controversial, but the second, for up to 280 houses east of Northampton Road – between the David Wilson estate and the roundabout – had residents very concerned. Elsewhere, DDC rejected the planned Buckton Fields development on the edge of Northampton because of its impact on traffic, but

the developers were expected to appeal. More council money-saving was in evidence, with many street lights switched off. The first meetings of the Neighbourhood Plan Working Group took place, led by the new chair of the Parish Council, Mike Lacey. At the Country Park, kids were delighted with the new play equipment, while the first Merry Tom Folk Festival entertained the adults.



Issue 31, December 2011

Pytchley Court Care Home emerged under new ownership following the bankruptcy of Southern Cross during the summer. The new owners, HC-One, planned significant new investment. DDC revisited its earlier decision to reject Buckton Fields, after the planning committee chairman Frank Wiig warned councillors that a rejection would likely be overturned on appeal, leaving DDC to pick up a significant legal bill. The developers pledged £1m to improve

roads in Kingsthorpe and £3m towards the construction of a north-Northampton bypass. The Jerry Green Dog Rescue Centre on Creaton Road was set to close after a last-ditch bailout attempt failed – and despite 3000 people signing a petition in support of the Centre.

Issue 32, March 2012

Mixed blessings for housing developers: the Carter Jonas proposal to the west of Northampton Road was refused, but within days Barratt Homes started consulting on its plans to build 150 houses east of Northampton Road (what would become known as the Saxon Rise development). From the outset, Barratts engaged villagers in conversations around how their development would affect the village and how the developers could address the infrastructure issues – lack of parking at the shops, capacity at the doctor's surgery, and spaces at the primary school. Other planning decisions were just as hard-fought: the six wind turbines between Kelmarsh and Haselbech, rejected by DDC in December 2010, were approved on appeal. On the crime front, metal was the hot ticket item, and the high price of scrap metal fuelled a spate of metal thefts. Anthony Watkins, Brixworth's famously outspoken vicar, retired in February. Locum priests would cover the village till a successor could be found.

Issue 33, June 2012

As the country was feverishly anticipating the London Olympics, several village residents found ways of getting even closer to the action. None closer than Ruth Gillet (pictured), one of the lucky few to be chosen from over 8,000 nominees to carry the Olympic torch on art of its route through the UK. The Bulletin's first-ever 'Deserving Cause' campaign came out in support of young Connie – a four-year old suffering from a very rare disability that left her with a number of issues, including difficulty walking. The money received from the Bulletin would pay for sessions in a specialist centre helping her get to grips with walking. A proposal to build a new care home next to the Cricket Club was attracting attention. Meanwhile, DDC's money-saving drive resulted in the closure of the Information Point in the village – except that it didn't, because the Christian Fellowship promptly mobilised volunteers to step in and keep the facility running.



On a sadder note, Sergeant Mike Grady announced his early retirement. In his final police report, he reflected on what he'd achieved in his six years in the village. "I came to the area in early 2006 and was shocked to find that there was a dispersal area in force, anti-social behaviour was rife, crime was relatively high at 242 crimes per annum and you needed attention. I recall marauding youths on the Ashway and gangs of youngsters hanging around the village centre intimidating others and damaging property. I impressed upon my team, not quite a 'no tolerance' mindset, but not far off. Slowly we got to know who was causing the problems, who was committing the crime and we began to gain your support. Your Parish Council supported the creation of a police office in the village in 2007, which proved a crucial turning point. Crime and anti-social behaviour reduced every year and this year crime in Brixworth parish was down another 20% to 128."

Issue 34, September 2012

The battle over new housing estates went into the next phase as DDC approved Barratt Homes' plans for 150 homes to be built next to the David Wilson Estate, to the dismay of many villagers. The vote was a hotly-contested affair, won by five votes to four against. Most those voting in favour did so because, by the time the Brixworth estate came before planners, DDC had fallen well behind its five year target for building new houses and any decision to refuse would most likely have been overturned on appeal anyway. There was one silver lining for those opposing the new housing: Carter Jonas, who were expected to appeal against the refusal of their 150-house-development to the other side of Northampton Road, withdrew their application.

Meanwhile, the Queen's Diamond Jubilee was suitably celebrated with a pageant, party and lighting of the Brixworth Beacon. To top it off, we found a lovely local link to the other key event of the year, the London Olympics – turns out that Lisa Wainwright, at the time ceo of Volleyball England and heavily involved with the organisation of the Olympics and Paralympics, had recently moved to Brixworth and was all too happy to give us an interview.

Issue 35, December 2012

The village was down to two pubs, albeit temporarily, following an accidental fire at the Red Lion, which caused extensive damage to the interior of the pub. Frank Wiig, longstanding Brixworth Parish and District Councillor, passed away following a long battle with cancer, while the cricket club mourned the sudden loss of Brian Waller – a stalwart of the club for more than a quarter of a century. The houses around Froxhill Crescent suffered a mini crime wave, with seven burglaries in the space of just one week, on top of several thefts from cars.

BRIXWORTH
DENTAL
PRACTICE

smileforalifetime™

BRIXWORTH
LASER &
SKINCARE



Dental Practice
DENTIST OF THE YEAR 2016

- For just 53p/day you can enjoy award winning private dental care
- Orthodontics, Dental Implants, Hygienist
- Early, late and Saturday appointments

brixworth-dental.co.uk

Laser & Skincare
NOW OPEN AND OFFERING

- Laser hair removal
- Northamptonshires only Magma Diode Laser
- Dermapen
- Cryopen
- Dermal fillers and Botox

brixworth-laser-skincare.co.uk

Brixworth Dental Practice and Brixworth Laser & Healthcare
Charter House, Spratton Road, Brixworth, NN6 9DS

☎ 01604 880293

Issue 36, March 2013

The spate of burglaries around Froxhill Crescent continued, with a further eight properties broken in between late December and early February. All featured a similar location, method of entry, and type of property stolen, linking to speculation the burglaries may be linked. Two men were arrested in connection with the events (but later released without a charge). Reverent Chloe Willson-Thomas (pictured)

was confirmed as the new vicar of Brixworth, to start her new role at the end of April. A classically trained singer, Rev Chloe was hoping from the outset to use music as a way to encourage people into the Church – a plan that has since become a successful reality through the Festivals of Music that have graced our church for the past two years. At the shops, two separate plans to expand the car parking were under discussion, both on the site of two houses adjoining the shops which would have been knocked down under the proposal. Of course neither plan came to fruition as the houses have now been refurbished and are currently awaiting new residents!

The Brixworth History Society published 'Another History of Brixworth'. Using photographs and the long memories of residents, the book charts the history of Brixworth from the late nineteenth century to present day. Finally, Princess Anne unveiled a memorial to Northamptonshire's firefighters at Brixworth Country Park.



Issue 37, June 2013

Graffiti was the latest issue in the village, with new examples appearing on the Ashway playing field changing rooms almost every Saturday night. Brixworth's long-standing art framing shop – formerly Gunnett's, later Opal Framing – closed up shop as the owners followed their dreams and moved to Yorkshire. Today, the shop is Dominic Lehané's hair salon. Meanwhile, in a clear testament to the resurgence of the property market, O'Riordan Bond re-opened their mothballed Brixworth office, which had lain dormant for four years. On a sadder note, Brixworth Mixed Hockey Club reached the end of its road, folding after 37 years of play.

Brixworth Home & Hardware



- Garden products
- Paint
- Timber
- Bulbs
- Watch batteries
- Kitchenware
- Bakeware
- Logs & kindling
- Calor gas & coal
- Carpet cleaner hire
- Dry cleaning, etc.

Hunters Way, Spratton Road, Brixworth - 01604 880580
(formerly Lovell Hardware)

Issue 38, September 2013

Stephen Pointer, longstanding member of Brixworth Parish Council and also one of three Brixworth members of Daventry District Council, served a lawsuit on the Parish Council for discrimination and harassment over their failure to supply him with a reading aid and for allegedly leaking information to the press and social media. Pointer had asked the Parish Council to supply him with an iPad or equivalent to help him read Council paperwork. The complaint was to spawn two court cases; while the first was abandoned after a few months, the second was found in favour of Pointer earlier this year with the final hearing on costs scheduled for December 2016.

DDC agreed the detailed proposals for Barratt's 150-house new estate east of Northampton Road, which would be built between 2013 and 2017 and would be known as Saxon Rise. The annual Speed Watch campaign identified Northampton Road as the worst speeding hotspot in the village, with 98 cars caught breaking the speed limit. Having completed its preparations, the Neighbourhood Plan Steering Group started looking for volunteers to start develop the details of the Plan – which, three years on, is finally on the home stretch.

Issue 39 – December 2013

Brixworth Central Sports and the Parish Council ended up in a lengthy process to clarify the terms of the lease governing Central Sports' pavilion on St Davids Playing Field, which was built on land owned by the Parish Council. The matter quickly got complicated with the only real winners being the lawyers on both sides (though at least with the benefit of hindsight we know it did get sorted, eventually!). In a rather happier development, police were able to drop a massive drop in crime compared with the same period in 2012 (which had, admittedly, been the peak of a string of burglaries).

Daventry District Councillors Liz Wiig and Stephen Pointer announced they were quitting the Conservatives and joining UKIP. At the time they'd stressed that this was a decision they'd thought long and hard about, though Pointer recently confirmed that he and Wiig switched parties less than 24 hours after he was de-selected by the Conservative Party as a candidate for the forthcoming District Council election.

Issue 40 – March 2014

Barratt Homes confirmed they were looking to expand their recently-approved housing estate from 150 houses to around 220 by adding a further parcel of land south of the allotments. This would take the new development most the way down to the roundabout on the A508. The village group BRANE – Brixworth Residents Against New Estates – voice serious concern over the plans, which they said would further stretch the already-strained village infrastructure. A proposal to move the allotments to the tip of the proposed new development did not find much favour with allotment holders and was subsequently abandoned. The Neighbourhood Plan was starting to take shape, with a questionnaire to all villagers exploring the key areas of concern. Stephen Pointer brought his second court case against the Parish Council – this one, brought as an employment tribunal, is the case currently awaiting its final hearing in December.

Issue 41 – June 2014

Prompted by letters from villagers, the Bulletin launched a call to build a footbridge across the A508, which could potentially be paid for by Barratt Homes as a condition to receive planning permission for the expanded housing estate. Another housing developer, Redrow Homes, started making enquiries about developing a piece of land between Holcot Road and Scaldwell Road, which is near the tip to the far side of the A508. A village questionnaire meanwhile

showed huge support for the main recommendations of the draft Neighbourhood Plan, which seeks to limit any further developments. The first Brixworth Music Festival was announced for September that year, with two weeks of classical to light music to be performed at All Saints Church. Across the yard from the Church, Brixworth Centre Pre-School celebrated its 30th birthday.

Issue 42 – September 2014

Barratt Homes sought to woo Brixworth residents into supporting the second phase of the Saxon Rise development by offering to fund improvements to village infrastructure. Discussions with villagers showed acute concern about the ability of the doctor's surgery to cope with increased demand, and Barratts started discussions with local representatives, the NHS and the management of Saxon Spire Surgery to see whether the home builder could support the construction of a new surgery. There were further concerns about the availability of spaces at the primary school, but these were judged less serious, while the idea of a footbridge across the A508 was dismissed as too expensive and of limited benefit. Station Road won the undesirable accolade as the village speeding blackspot.



Issue 43 – December 2014

The Bulletin raised a cheer to Mercedes HPE on the edge of the village, who were celebrating their engines powering the Mercedes team to the top of the Formula 1's Constructors Championship. Phase 2 of the Saxon Rise housing estate went before DDC, seeking outline planning permission for 90 houses and a new doctor's surgery. It emerged that 132 Northampton Road – then home to ACE Reuse – had been granted planning permission for conversion into a fast food takeaway, much to the concern of the neighbours, many of which had not been given a chance to object. Boris Johnson paid an impromptu visit to the village and was snapped signing the visitors book at All Saints Church (see above), a copy of the Bulletin by his side. Superfast fibre broadband arrived in the village, at least for those lucky enough to live close to an upgraded phone cabinet. There was a lucky escape at the village hardware shop when a car smashed backwards through the shop front and ended up inbetween the aisles. Thankfully, nobody was hurt. Finally, Brixworth got to say farewell to its orange street lights as a programme to replace them with more energy efficient warm white lights got underway.

Issue 44 – March 2015

The future of Northampton Pets hung in the balance, as the building's owner sought planning permission to turn the shop into a fast food takeaway. The shop next door, ACE Reuse, was already due to be converted in a similar way, and neighbours were alarmed what two takeaways might mean for local parking, smells and noise. Add to that the fact that the pet shop is hugely popular with animal owners and families, and it is not surprising that a petition calling for the pet shop to be saved soon gathered nearly 500 signatures. DDC approved plans for Saxon Rise Phase 2, including a new doctor's surgery for Brixworth. Spratton History Society geared up to commemorate local heroes who served in World War I, including a fly-past of a replica BE2b biplane, the same type flown by the Spratton pilot Lt William Rhodes-Moorhouse RCF, who received a Victoria Cross.

Issue 45 – June 2015

The Brixworth Neighbourhood Plan was published in draft form, leading to six weeks community consultation. Nick Bunting won the DDC local elections for the Conservatives, taking the seat previously occupied by Liz Wiig for UKIP. DDC rejected the planning application to convert the pet shop premises into a takeaway. The owner of the property appealed. The legal battle between the Parish Council and Stephen Pointer rumbled on, with no end in sight. Meanwhile the state of the verges in Brixworth made for considerable discussion – whether it's too-infrequent mowing or parked cars damaging the grass. Finally the Sure Start centre closed up shop at Church Street and moved to the Brixworth Library & Community Centre, where it's been ever since.

Issue 46 – September 2015

Plans for the new Brixworth Surgery were unveiled, doubling the size of the current facilities. The £1.2m building will feature six consulting rooms and further rooms for nurses, plus more than double the number of parking places.

The building would be paid for by Barratt Homes under Section 106 funding, which is a feature of planning and obliges developers to help fund infrastructure the community will need to accommodate their housing. Work (at least according to the information at the time) was expected to start in 2016 with completion in October 2017. All Saints Church was spruced up with a £20,000 facelift to repair plasterwork

G. HAMSON & SON LTD

PRIVATE, COMMERCIAL & HEAVY MOTOR ENGINEERS



- Vehicle Steam Cleaning
- Air-conditioning Service
- Pre-packed Solid Fuels
- Calor Gas Stockist



Harborough Road Garage, Brixworth, Northants. NN6 9BX
Telephone 01604 881098

and repaint discoloured walls. Eyes now turned to the organ at All Saints which, more than 40 years on from its most recent overhaul, needed some TLC. A fundraising drive to finance a thorough clean and refurbishment of its 2272 pipes was launched. Northampton Pets could breathe a sigh of relief as the appeal against DDC's rejection of the application to turn the premises into a fast food takeaway failed.

Issue 47 – December 2015

Brixworth Parish Council celebrated a resounding victory in its battle against dog fouling in public places. A 'spray it orange so everyone can see it' campaign over the summer resulted in a dramatic drop from 117 'incidents' on the Ashway and St David's playing fields to just two. Northampton Road emerged as the top speeding spot in the village, with numbers doubling to 49 – sadly, the latest numbers reported elsewhere in this issue show that the number of speeding vehicles on Northampton Road rose further in 2016. Ongoing legal proceedings with former councillor Stephen Pointer caused the Parish Council to raise its legal costs budget to £64,000.

Issue 48 – March 2016

Northampton County Council started consulting on options for the route for a potential northern orbital bypass road (pictured), connecting the A428 – Northampton to Welford via Spratton – with the A43. The road would provide much-needed relief to traffic on the A508, but with costs potentially approaching £150 million, finance will be a problem. Northampton planners think that construction could begin 2018 at the earliest, and only if the money can be found. The death of John Blason, a stalwart of Brixworth

village life through so many roles over the decades (cricket club, parish council, Brixworth Bulletin, Central Sports Club, village garage, the list goes on...) left a big hole and resulted in a huge turnout for his funeral. The village gained a public defibrillator, installed at the Library and Community Centre, and preparations were well



was elected to Daventry District Council, taking the seat vacated by Ian Barratt. Brixworth Primary celebrated its re-affirmed 'Good' Ofsted rating, which also named it as one of the most improved schools in the country. Residents of Hanging Houghton, Lamport, Draughton and Maidwell breathed a sigh of relief after the confirmation that ultrafast broadband would be rolled out towards the end of the year. The provision had been in doubt for some time, and without sufficient early signposts the villages had faced the very real risk of

being permanently left off the high speed broadband map.

Issue 50 – September 2016

The three-year dispute between Brixworth Parish Council and former Councillor Stephen Pointer reached its conclusion when an Employment Tribunal Judge ruled in Pointer's favour. The ruling found that the Parish Council had failed in its duty to provide reasonable adjustment for Pointer's visual impairment. While the final bill for costs and damages is still to be settled at Bulletin press time, the legal fees alone are thought to have cost the Parish Council well over £50,000 and were not covered by insurance. The Central Sports Club unveiled its new John Blason Sports Bar. Draughton hosted a classic car show – its third – attracting an impressive number of classic cars from all around. An independent examiner studying the Brixworth Neighbourhood Plan concluded that even with ongoing expansions of parking, school and surgery, village infrastructure would remain tight for many years. Liz Wiig, long-serving Parish and District Councillor, passed away. Meanwhile preparations were well underway at the church for the third Brixworth Music Festival, once again bringing a broad range of classical music to the lovely venue of All Saints' Church. Finally the Bulletin expanded its reach to cover Maidwell and Scaldwell. - cfw

A

ARCHITECTURE

D

DESIGN

P

PLANNING

* BUILDING PLANS PREPARED AND *

* APPROVALS OBTAINED *

* PLANNING APPLICATIONS AND APPEALS *

* Residential and Commercial Projects *

* Architectural Services using Computer Aided Design *

* Contact Thomas Mitchell on +44(0)1604 882500; 07902 863911

* e:tfm@supanet.com * www.tfmdesign.co.uk *

Hanging Houghton & Lamport News

Tom and Harriet Wise of 18 Manor Road have a daughter Florence who was born on the 19th September. Apparently she is a very good girl – so far. We congratulate them on their happy event, and welcome Florence to the village.

The annual village BBQ was held on the August Bank Holiday weekend and took place in Tom's barn just over the Brampton Valley way. The weather was not ideal, however all was fine in the barn. The event was well attended with over 40 guests and villagers. I want to thank the volunteers who helped with the event, particularly Tom and Fran, Bob Cox for delivering the invites, Colin Harris who supplied, along with Tom and me, the BBQ's, and Percy May for the music. A good time was had by all.

We welcome new residents to the village, Peter and Cathy Dugmore who recently took up residence at 4 Manor Gardens, with their three cats. They used to live in the Northants area where they met some 20 plus years ago and have returned after living in Dorset and Hampshire. I hope that they enjoy village life in Hanging Houghton.

Nick Seaton has left 8 Manor Road and moved to the gatehouse to the Lamport estate, where he seems very happy. The cottage at number 8 is being refurbished and will presumably be let to new tenants.

The Harvest Supper was held at the Loder Hall in Maidwell on the 8th October. There was a bumper turnout this year with 50 plus guests. The good food, wine and company ensured that everyone enjoyed the night. Our thanks go to those who organised the event. The money raised will go towards the church.

Look out for the invitation to the Christmas Carols on the Village Green at Hanging Houghton, yes it is nearly that time of the year again. – Mike Philpott

Draughton News

Bake Off Moves to Channel 4 via Draughton

On December 10th, 2-5pm, Draughton Invites all budding Paul and Marys to present one or more of the following:

- Fruitcake full size - with a 4" miniature version (for tasting!)
- Yule Log - also with a miniature version
- Cake made by a child

Cakes judged by Rebecca Dudgeon of All Things Cakey in Daventry

Entries are also invited for decorated 4' Christmas Trees, to be judged by: James Brodie, Head of Art from Maidwell Hall School. Entries for all categories £5

For more information please contact Fabienne Fraser-Allen 01604 686696.

Draughton's Big Weekend 2017

The date for our Vintage and Classic Car Show with the Village Fair, Pop up Pub and superb Tea Tent is Sunday 25 June 2017.

If you have a vintage, veteran or classic car that you'd like to bring please contact us on:

07764 162437 or sebastian.calnan@yahoo.co.uk.

Monies raised go to two village charities: Draughton Clubroom and Friends of St Catherine's. – Kate Calnan

Central Sports gets patio makeover

Brixworth Central Sports Club volunteers spent the summer raising funds in order to extend the Club house's patio area for its members. This finally became possible after the Club finished lengthy negotiations with the Parish Council for a new lease on the land.

The Club has now bought 250 patio slabs which will be laid ready for the Spring and Summer months. The extension will extend the patio to provide a five metre wide area all the way across the front of the building, with a new ramp for disabled access.

The garden area is popular with families as children can play in the park whilst parents enjoy a pint or a glass of wine in the sunshine keeping a watch on their children. The committee are also looking at a number of other updates which may include free WiFi access, card payment options and a new logo for polo shirts to be worn by committee members and bar staff. Members will be able to buy the polo shirts in the club house.

Membership this year was £1 per adult (free for children) and the committee plan to keep membership the same over the next year.

Central Sports Club will hold several events in the build-up to Christmas, starting with putting up the Christmas decorations on 5th December and Santa's visit with presents for children on the 18th. A Christmas music extravaganza follows on Christmas Eve with mulled wine and mince pies, the traditional Boxing Day games and raffle. All events are free to members.

Follow us on Facebook for more details and other events or come into the club where there will be posters advertising upcoming events.

– Jacquie Bird

sky SPORTS

BT Sport

Fosters & Guinness £3.30

John Smiths £3.10

Bottled Ales £3

Strongbow £3.30

Wine £3.10



BRIXWORTH
CENTRAL SPORTS CLUB

Opening times:

Wednesday	7pm to close
Friday	7pm to close
Saturday	4pm to close
Sunday	12pm to close

Come and join us at St David's Recreation Ground

Available for private bookings on Mon, Tues & Thurs. For enquiries please call (01604) 881203 or 07715 231550.

New members welcome—only £1 to join! For our latest news & events look for us on 

Daventry District Explorer Scouts: Kandersteg 2016

Explorer Scouts from Brixworth & Scaldwell Scouts made an unforgettable trip to Kandersteg International Scout Centre (KISC) in Switzerland in August.

Lord Baden Powell set up Kandersteg in 1923 in Switzerland as a place where Scouts from all over the world could meet. At an elevation of 1,200m above sea level KISC sits amongst Swiss alpine villages with dense forests and the emerald River Kander running through it. All this surrounded by mountains make it a stunning environment to be within. Daventry District Explorer Scouts had spent two years preparing for an adventurous backpack rail journey to KISC.



For the 22 Explorer Scouts and five Leaders it was their first overseas Scout expedition. Our excited arrival at Paris Gare du Nord proved even more interesting when the group was split during a security shut down, but eventually we all arrived safely our hostel to drop off kit before heading to the

Eiffel Tower. Onto the water for a cruise along the Seine onto Notre Dame, La Plage beach and the Louvre, before returning to the hostel for a burger fest and bed for the night. Paris was good, but manic.

Early start the next day with four more train trips scheduled. Thankfully European trains run on time with helpful staff who cater brilliantly for groups, so the Explorers soon became well practised at train transfers between Paris, Strasbourg, Basel, and Bern. Each train leg had its memorable moments but the highlight of all had to be meeting the Surprise Stressenchoir group on the Basel train. These were homeless people heading to Bern to perform. Our leader John played their piano accordion for us and them to sing together. A really uplifting special moment for all of us there. Eventually we arrived at Kandersteg station which left only a short bus hop to KISC itself.

Day three was our first full day at KISC. Mainly it was to be an acclimatisation rest day where we would participate in a few traditional scouting ice breaker activities, but a group of seven did set off for the Chäligang Via Ferrata. Via Ferrata is climbing mountain routes equipped with fixed ladders, cables, and bridges (pictured, left). Some see it as less dangerous than traditional climbing yet it still has some considerable, but manageable, risk. Chäligang itself was the tamer of the two Via Ferratas we would be tackling during the expedition, but still a serious challenge all the same. Those remaining at KISC took part in the international football and volleyball competitions with all nationalities playing within mixed teams. Our seven climbers returned triumphant having all succeeded in completing the first challenge. The Explorers' own barrel fires would however see them staying up late, very late, most nights in fact. A great first day.

The next day saw the whole group take the gondola from Kandersteg up to Lake Oeschinen, a Unesco World Heritage Site, at 1,600m. The sun came out for us and thankfully never left for the remainder of the week. The meadows around Lake Oeschinen were stunning with the cowbell-jangling soundtrack for constant but beautiful company; all of course set within incredible mountain views. The first activity of the day was the adrenaline fuelled Rodelbahn toboggan run. Some of those who attempted the downhill speed records enjoyed some memorable spills and the not so enjoyable resulting friction burns - oops. The swim in the 20°C emerald water of Lake Oeschinen



soothed the injuries and aches though had the boys whining a little, actually – whining a lot! The rowing boats maybe didn't show off British rowing at its best but were great fun all the same. Once an ice cream was enjoyed we wandered back down the mountain to Kandersteg for the international evening at KISC to conclude an amazing day.

Interlaken rightly claims to be the outdoor activity capital of the world so this was our destination for the next day. Canyoning was first, which involves sliding, abseiling, scrambling or throwing yourself down a white water river wearing a wet suit and helmet - awesome. The 7m jump had many of the Explorers overcoming fears by throwing themselves, literally, into the challenge. The high ropes in the afternoon catered for everyone's ability but even challenged the strongest and bravest of our Explorers. Another train and bus back to KISC for a tired but buzzing group.

It was an early start the next day for the first group of Allmenalp Via Ferrata participants. This was it, the big event. So with much trepidation an unusually quiet group approached the rock face. The instructions were simple but aimed to grab your attention – don't clip on, you fall, you die. Its columns, gorges, and rope bridges didn't disappoint with a spectacular and often nerve jangling difficulty. The overhang ladders and Tyrolienne traverse over the Allmbach waterfalls being the highlights. So after 3.5 hours climbing, scrambling and struggle some very relieved Explorers picnicked with a glorious view of the Kander valley some 1000 foot below. Adrenalin buzz delivered - in full. The afternoon swimming pool visit offered a much welcomed chance for relaxation – diving, water volley ball, slides and the first major injury of the trip! Thankfully Swiss doctors are as efficient as the public transport system. The Explorers

T&T PLUMBING

- Central heating
- Boiler replacement
- Conversions
- Bathrooms designed & installed
- Landlord certificates
- General house repairs and building work

Local personal service, based in Brixworth



01604 889447
07855 051198
07851 726812

coped admirably catering for the injured party during the rest of the trip – proud.

The next day saw the second group also take on the Allmenalp Via Ferrata successfully. We then bussed everyone to the amazing and enchanting deep blue lake of Blausee for 'chilaxation' in its nature park. Many folk law tales behind this place but good marketing really and the fish were pretty amazing. Back to KISC for light trails at night which gave us another moment to realise how lucky we are.

Another day, another challenge, or maybe not for some. Twelve of us headed up the Bunderspitz 2460m mountain for a six hour hike back to KISC. For perspective, Ben Nevis is 1345m. Sometimes the scenery up there was Lord of The Rings type stuff, the heat and height possibly making as much of a quest. The remainder of the group bussed and trained to the Spa at Brigerbad. The reports were 'wow' this place is incredible. Even good enough for Theresa May, but she refused to join our lot – can't think why? They all returned clean looking and in a new state of karma. The day finished with the traditional camp fire. Probably the best one we've been too and was enhanced by Barnaby's comedy sketch with Jacob & Isaac in support.

Our last full day at KISC focused on packing, wrapping up and chilling in a traditional Finnish Sauna; hard life. We decided to spend the final night in Kandersteg for a pizza fest before crashing in the German Shelter at KISC. The lightning storm was spectacular; the rain an experience we thankfully didn't have to suffer during the week under canvas.

Coming home was to involve a bus, five trains and a coach back to the Northants. Emotional departure from Kandersteg itself from what was an incredible brilliant experience. The good humoured mischief and laughter of the young people was constant pleasure throughout a memorable trip. We the Leaders were tremendously proud of our Explorers, they represented themselves and Great Britain brilliantly. Their behaviour was exemplary during a jam-packed demanding schedule. A big thanks to everyone who supported us directly or indirectly to make this trip of a life time happen for the young people and Leaders. Not only had we the most incredibly exciting adventure, though sometimes scary, we have all grown new or strengthened existing friendships for life. We hope the future brings many more similar Scouting adventures for us all. Thank you, Daventry District Explorer Scouts.

- Shaun Macken

Planning update

DA/2016/0519 33 Broadlands Construction of first floor side extension and part two/single storey rear extension (revised scheme)	BPC No Objections DDC Refused
DA/2016/0544 The Manor, Harborough Rd Construction of detached double garage	BPC No Objections DDC Approved
DA/2016/0612 38 The Ridings Lawful development certificate (proposed) for construction of rear single storey extension	BPC did not receive application DDC Approved
DA/2016/0673 132 Northampton Road Change of use of first floor to residential flat	BPC Objecton Withdrawn
DA/2016/0700 38 The Ridings Single Storey rear extension	BPC No Objections DDC Approved

DA/2016/0643 2 Froxhill Crescent Front porch and first floor side extension	BPC No Objection DDC Approved
DA/2016/1009 Victor's Barn, Northampton Rd Variation of Condition 1 of planning permission DA2013/0510 (Continuing Care retirement community, comprising 60 bed nursing home, 25 close care apartments and 7 close care cottages) to allow commencement of each phase prior to full submission of all reserved matters	BPC Objection DDC Approved
DA/2016/0716 5 Hunt Close Demolition of rear garage and construction of single storey rear extension	BPC No Objection DDC Approved
DA/2016/0815 24 Windmill Glade Removal of hedge and fence and construction of replacement fence (retrospective)	BPC No Objection DDC Approved

Brixworth & District U3A

Our group meets in Brixworth Village Hall on the first Wednesday of the month at 2pm.

In August we had our annual visit to Northampton Sailing Club. We had a fabulous day out in gloriously sunny, if a little breezy weather. It was ideal sailing weather with many members enjoyed a sail in Sailability's two Drascombe Longboats. We were provided with a wonderful choice of food at lunch as well as afternoon tea. There was plenty of opportunity to chat with friends. We were able to make a sizeable donation to Sailability.



The weekend group meet on the last Sunday of the month and members take it in turns to organise an event. Since the group started earlier this year they have been to Fun in the Park in Abington Park where they watched and listened to the fantastic Northampton Concert Band and consumed too much tea, cake and ice cream. Other events being Cottesbrooke Garden Fete, Castle Ashby Gardens, Maidwell Open Gardens and in October they are going to 78 Derngate for a tour and afternoon tea.

On Wednesday 14th September seventeen of us took a canal trip on the Crusader Community Boat (see photo) starting from Gayton, lunching at The Wharf, Bugbrooke before a return journey to Gayton. It was a beautiful day and we all sat on deck and watched the lovely scenery go by. Further information on the U3A and interest groups can be found on our website www.u3asites.org.uk/brixworth. – Judy Smith



This page is sponsored by

your local property consultant

stuart little

Tel: 01604 616886 Fax: 01604 639955 Mobile: 07970 251814 Web: www.horts.co.uk



Library events

Activities for Under 5s

(every week except the week commencing 26 December)

Rhymetime for the Under 5s

Mondays 2.30pm and Fridays 10.30am

Play & Learn for Under 5s

Tuesdays 1.30 – 3pm

Play & Learn for Under 1s

Thursdays 10am – 12noon

Baby weigh-in clinic

Thursdays 10am – 12noon, followed by developmental checks

Rhymetime for the Under 5s

Fridays 10.20am for 10.30am start

IAIM Infant Massage with Leveta Lawson

Wednesday mornings 11am – 12 noon term-time only.

These are 5 week courses for parent/carer and baby (from age six weeks). Price is £60 per course to include all materials, payable in advance to Leveta Lawson (see Facebook page: infant massage by Leveta Lawson) or see staff at library.

All Under 5s activities are in the Children's Centre Area on the mezzanine – lift available in foyer. The Children's Centre area is closed to other users when Under 5s sessions are taking place.

Activities for children up to 12

Crafts

Saturdays 9am – 1pm, Sundays 11am – 2pm

Messy Crafts

Wednesdays 2.30pm every school holiday – next sessions 28th December and 4 January

Under 8s must be accompanied by their parent or carer. Free, but please book in advance either at the library or email brixlib@firstforwellbeing.co.uk

Adult events

Colour Me Calm - Adults' Colouring Club

Free and suitable for all ages teens upwards

All materials provided, we have a wide selection of colouring sheets for you to choose from, so why not give it a go! Helps you relax and unwind. Drop in from 11am to 2pm, tea and coffee available for £1.

Book Club

The Brixworth Library Morning Readers Group usually meets first Tuesday of every month 10.30am. Open to all – please ask at library or email brixlib@firstforwellbeing.co.uk

Get involved

We are looking to set up a new "Friends of Brixworth Library Group" this year. Anyone interested please contact Jill Barber at brixlib@firstforwellbeing.co.uk

Gain experience

Thinking of a career working with children, but need some experience first? We have volunteering roles for **Under 5s Activities Helpers/ Leaders** and **Children's Crafts Activities Helpers/Leaders** and can offer you training, work experience and a reference. There are activities most days of the week, so hours can be flexible (eg couple hours a week or fortnightly, term-time or school holidays only) but you must be available to help on a regular basis. We would

particularly like **Rhymetime Helpers** (no singing required!) and **Rhymetime Leaders**.

We would also love to recruit more **IT Buddies** – we need volunteers to help customers with IT queries, getting to grips with new lap-tops, iPads, tablets etc and also help with Blue Badge online Applications..

We also welcome any young adults volunteering for their **Duke of Edinburgh award**.

For any of the above roles, or for more information on volunteering at the library, come in and speak to Jill, or view the volunteering roles and apply online at www.northamptonshire.gov.uk/getinvolved

Other Services

IT Buddy

Our new IT Buddy, Ian Topham, is available if you need help with IT Basics, using a lap top, or want to get to grips with a new i-pad, or any other IT queries. He can give you free 1:1 help and advice, just come in and make an appointment (usually available Tuesday or possibly Thursday).

Bus passes – new, lost and renewals

DVD hire

Checking service for Blue Badge applications

Computer use – free on Fridays

Photocopying

Laminating

Library shop

Room or pod hire: For more information, please speak to library staff.

Opening Hours

Monday – Friday 10am to 6pm

Saturdays 9am to 1pm

Sundays 11am to 2pm

The library will be closed 25-27 December and 1-2 January.

Open all other days as usual

Contact us at brixlib@firstforwellbeing.co.uk - note new email address, also check out the new website www.firstforwellbeing.co.uk

Keep up to date with all the latest activities at www.facebook.com/brixworthlibrary

- Jill Barber



Sunny Socks
NURSERY SCHOOL
Park Farm
Brixworth,
Northampton
Tel: 01604 882155

www.sunnysocks.co.uk
brixworth@sunnysocks.co.uk

Contact us to arrange a visit to see our homely and friendly nursery

★ Open 51 weeks a year, 8 am - 6 pm
Part-time sessions available

★ Committed to quality childcare
from birth to school age

★ A loving & caring environment where
children can socialise & play safely

★ High levels of security for your peace
of mind

★ Fully qualified, dedicated & long-term
staff

Quote from our Ofsted report:

"Children are eager to participate & show high levels of engagement in activities. They are curious and keen to try new things out for themselves. They make good progress & acquire good skills & attitudes to support their future education".



YOGA FOR YOU

Brixworth Library Community Hall
MON 7.30 - 9.00 pm
TUES 1.45 - 3.15 pm
All abilities welcome
01933 673212 / 07729 099206



change4good@annewiddup.com
www.annewiddup.com

Brixworth Primary School Award for Writing

The 2016 Award for Writing, awarded for the best writer in Year 6 at Brixworth Primary School and supported by the Brixworth Bulletin, was presented to aspiring writer Eloise O'Neill.

The Brixworth Bulletin would like to wish her good luck for the future. As for an example of her writing, see 'Road's End' below. – cfw

Road's End

Quiescence. Gazing upon a turned up wheel, an enigmatic figure lingers beside a vehicle slumbering in its death. This gangly, exceedingly eerie being is coated from head to toe, goggles shielding his eyes and a crimson scarf binding his appearance further! Meanwhile, a vigorous, efficient machine appears; an immediate gesture of a thumb is made by the figure! Gradually grinding to a halt, the driver receives his first glimpse of the unidentified man; a shiver shifts suddenly up and down his spine as thoughts course through his mind. How did the previous accident occur? Should he allow this petrifying man inside? Is he even human?

by Eloise O'Neill

1st Scaldwell Guides



This year we have been celebrating our 60th birthday as our company was registered in September 1956. We have been doing activities throughout the year, including enjoying a 1950s night, visiting Brixworth Church and climbing the bell tower, holding a coffee evening, going to see Joseph at the theatre, completing the Traditions of Guiding badge and enjoying a (slightly soggy!) picnic at Lamport Hall. The Brixworth Brownies are also 60 years old this year and to celebrate we held a joint party at the centre complete with jelly and ice cream. We filled smartie tubes with 60 coins to make a giant 60. We raised nearly £75 which we are donating to the First Responders. As a way of marking the end of our 60th year we are off on a Disney themed weekend away in November.

– Jill Gunnett & Vicki Howlett, 1st Scaldwell Guides

Letters to the Editor

Nuisance dog barking

In my local area alone, we are surrounded by barking dogs. As I sit here typing, there is one barking at the back of my property and two at the front. This seems worse now obviously because we have our doors and windows open on nice summer evenings.

Whenever I walk through the village, there is always a dog barking somewhere. The old lady living in one of the bungalows behind me had to put up with a dog barking constantly in the months before she died.

The dog living opposite me even barks at the church bells on Sunday morning!

The owners of barking dogs need to be better aware of their responsibilities with regards to being considerate to their neighbours. And what avenues are open to residents subjected to this nuisance?

Name supplied



Travel in style...

Rely on us to be on time, everytime

- | | |
|----------------------------|------------------------------|
| ■ Airports & Sea Ports | ■ Chauffeur Service |
| ■ Theatre Trips | ■ 4-6-8 Seaters |
| ■ Nights Out | ■ Specialist Courier Service |
| ■ Local Village to Village | ■ Secured Airfreight Service |

We move people and products in the UK and beyond...



Quick Booking
Scan me to text us your booking!

KPD GROUP

01604 882 798
www.kpdgroup.com





BRIXWORTH

Parish Council



News & Views - Winter 2016 edition
www.brixworthpc.org.uk



2016 has been a year of transition for Brixworth Parish Council. Two of our longest-standing members, Mike Lacey and David Parnaby, decided not to stand for re-election at the end of their four-year term in May, and the Parish Council lost a wealth of

knowledge and experience as a result. Mike joined the Parish Council in 2007, and David in joined in 2010. I would like to thank them both for their service to the community.

We have subsequently been fortunate enough to welcome Neal Brown, Justyna Pittam, Elaine Coe, Stuart Coe and James Collyer as Parish Councillors, and their skills and enthusiasm will strengthen the Parish Council as we look to the future.

However, at the time of writing, we still have two available seats. If you have the vision and drive to help shape our community, please contact the Clerk, Mrs Emma Baker: clerk@brixworthpc.org.uk.

By the time you read this, the referendum on the Brixworth Neighbourhood Development Plan will have been held. The Neighbourhood Plan represents five years work by the Neighbourhood Plan Steering Group, and on behalf of the Parish Council, I would like to sincerely thank them all for their tremendous efforts.

Brixworth Parish Council has been developing a Business Plan, which clearly sets out our targets and aspirations for the current four-year term. More information is available elsewhere in this issue of the *Brixworth Bulletin*, and I hope you take the opportunity to examine the Plan and how it can benefit our community. You can download it from bit.ly/bpc-plan2016.

Brixworth Neighbourhood Development Plan 2011-2029



Referendum Version
(September 2016)



Brixworth Parish Council

As usual, the Parish Council bought some daffodil bulbs, and Mike Nice organised some Parish Councillors and members of the public into a planting party.

The bulb brigade focused on the stretch of grass verge between the Red Lion and the Coach and Horses, which has previously been somewhat neglected, compared to the rest of the village.



Christmas lights in Brixworth

Along with all the usual Christmas activities in Brixworth the Parish Council will be supporting local businesses to get festive.

Following research of trees, lights and views of local businesses the Parish Council are providing an artificial external Christmas tree and LED lights to businesses in the village where the tree can be fitted safely at a high level and where landlords have given permission.

Issues such as insurance and safety have been taken into account and the trees and lights will be fitted, maintained and stored by the parish council at no cost to the businesses.

Welcome, Tyna Pittam!

Justyna Pittam, who likes to be known as Tyna, joined the Parish Council in August this year. She originates from Poznan in Poland, but came to England with her husband 17 years ago. Although her husband was from Moulton, Tyna liked the look of Brixworth and they settled here where she remained after her divorce.



Tyna has two daughters aged 24 and 16 years.

She is very proud of her daughters, especially her eldest daughter who did not speak any English when they arrived in this country but who is now a teaching assistant at Brixworth Primary School. Tyna's youngest daughter attends Moulton School.

Tyna joined the Parish Council as she wanted to be more involved in what happens in Brixworth. By profession, Tyna is an accountant, and her knowledge and skills will be of good value to the Parish Council. She has also recently put those skills to good use by taking over as treasurer for the Brixworth Centre and also helped Brixworth Central Sports club with updating their accounts.

Tyna also has some interesting hobbies. She enjoys cooking and was a recent 'Come Dine with Me' winner and tells some interesting stories about the making of the television programme. She has remained friends with one of the other members of the group, a 'Mr T' impersonator.

Tyna's other hobby is trekking, four years ago she trekked through the Atlas mountains covering 28 miles, which she says was very hard going. Two years ago, she was a member of a small group of people who spent five days in Peru, walking from the Andes to Machu Picchu, sleeping in the mountains.

Tyna has recently moved house and her latest hobby has been renovating her new house. She says it has been a steep learning curve but her decorating skills have definitely improved!

Dog fouling

Once again Brixworth Parish Council is taking an active part in reminding dog owners to be responsible and pick up their doggy poo. There are posters around the village and as before, dog poo spraying will be taking place. One of the residents of Brixworth has volunteered to help with this so thank you to Helen Blackburn who will be spraying any fouling she finds as she walks her own dog. This will make the fouling clearly visible to pedestrians, raising awareness of health and safety issues and shocking irresponsible dog owners into picking it up.

Previous campaigns have shown a marked improvement in reducing the amount of dog fouling in Brixworth but it still remains an issue. It is hoped that this campaign will reduce the fouling even further and once all the data is collected we will be reporting on it on the Parish Council Facebook page and in the next Bulletin.



Planning matters

Since the last report no major applications have been received, applications have generally been for domestic extensions and work to trees.

At the time of writing there has been no decision on when the new surgery will commence although it looks like archaeological works have been completed.



Work on the Chinese Takeaway and the Indian Restaurant continues, no doubt both are likely to be open before Christmas; as stated previously, keep an eye on social media postings for opening dates.

Work continues apace on the Mercedes extension, and congratulations to the team there for retaining the F1 Constructors Championship.



As many of you will have noticed, O2 have installed a new mast on the corner of Scaldwell Road and the A508; hopefully this will bring us all improved mobile coverage.



As with previous reports, there still remain several applications outstanding with Daventry, although at this time a majority of these are domestic extensions and have not been opposed by your Parish Council.

Business Plan

Following the recent uncontested election of the new Parish Council, your Council have decided to further their transparency to the residents by producing and publishing on their website a Four Year Business Plan.

This is the first time the Council have embarked on this journey, we would therefore ask the residents of Brixworth to bear with us during the early stages whilst we work to provide the transparency and services you all require.

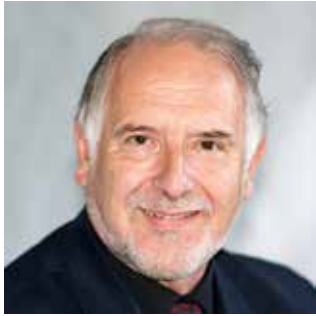
It is intended the Business Plan will outline the various services the Council provide, provide a timetable when decisions and meetings take place and lastly a list of aspirations the council would like to

carry out. Some of these are short term with minimal costs whilst others are long term aims which could have a bearing on future Council Tax levels.

The council would welcome the residents input at either the monthly surgeries or at the monthly Council Meetings to either voice their approval or otherwise. The dates of these meetings are well publicised on social media platforms and on the signboards in the Community Centre and by the shops on Hunters Way.

As the Business Plan becomes more embedded within the council's activities it is hoped that in the future residents can come forward with suggestions to be included as the Business Plan moves forward.

Brixworth Parish Council



Ian Barratt



Jackie Bird



Neal Brown



Elaine Coe



Stuart Coe



Alex Coles
Chairman



James Collyer



Stephen James



Sandra Moxon



Kevin Parker



Justyna Pittam



Peter Saxton

Parish Council meetings December to February

Full Council

Tues 20th December 2016 7.15pm
Tues 24th January 2017 7.15pm
Tues 28th February 2017 7.15pm

Planning

Mon 19th December 2016 7.30pm
Mon 9th January 2017 7.30pm
Mon 30th January 2017 7.30pm
Mon 20th February 2017 7.30pm

Media & Communications

Weds 14th December 2016... 7.30pm
Weds 11th January 2017 7.30pm
Weds 8th February 2017 7.30pm



Mrs Emma Baker
Clerk to the Council
clerk@brixworthpc.org.uk
01933 682447
4 Well Street, Finedon NN9 5JP
www.brixworthpc.org.uk
www.facebook.com/brixworthpc
twitter.com/brixworthpc

*Parish Council photos by
Brixworth Photographic Society*



BRIXWORTH MATTERS

 BCF Community Church

Since September BCF Community Church has been running an Alpha course. Those attending on Wednesday evenings are enjoying a free 2 course meal followed by a time to think, chat and ask questions about life, The meaning of life, and what it really means to be a 'Christian'.

During the first DVD based talk Nicky Gumble, the presenter, talks about 'something missing' in life when humans ignore their creator and live outside a relationship with God. I could relate to much of what he was saying.

Going through my teenage years and into my early twenties, I did so doing what many young men do, basically living to please myself but in the end, I became very unhappy.

I didn't realise it at the time but I look back now and see that I too had a 'hole in my heart', Not physically but spiritually, there was something missing in my life that only God could fill.

Jesus said, "I have come that they (you and me) may have life and have it to the full" (John 10:10)

Since coming to faith in Christ, I have never looked back. Jesus Christ brought me into a relationship with God that has completely transformed my life. He has brought me a full life, not in the fact that I have too many things going on (although sometimes that is the case)! but more that I am satisfied, at peace, and there is no longer that 'hole' or void in my life.

This Christmas (yes Christmas is not too far away now) why not reflect a little further on who Jesus was and is and who he is to you? Why the birth of a baby in a manger still causes the shops to shut and the world to sing and celebrate. Our Nativity service outside the community centre (December 18th, 4pm) and Sunday services throughout December (including Christmas day 10.30am-11.15am) will be designed to help us reflect a little more on Jesus's birth, death, and resurrection.

Hope to see you there or around the village. In the meantime, may I wish you all a wonderful Christmas and a very happy new year.

Andy

Contact Andy Lloyd Williams on 07958 604961



Outdoor Christmas Nativity

Sunday 18th December 2016 4 p.m.

Come and join us as we celebrate and act out the Christmas Story. If you have children they may like to take part! Dress them up as an angel or a shepherd or a king and we will include them in the Nativity (great photo opportunity!)

We hold it outside the Library and Community Centre and Jacko the donkey (and maybe another) will be part of the entertainment!

Last year 300-400 folk Attended, Look forward to seeing You this year.

Hot mince pies and a drink served after the Nativity.

P.S If the weather is inclement we will be holding the Nativity at the School at the same time (possibly without Jacko!)



Induction of Andy Lloyd-Williams

On Saturday September 3rd BCF Community Church marked the official Induction of Andy Lloyd-Williams as their new Minister (we say 'new' but Andy is now 7 months into the role and settling into things very well). The service was at Brixworth Village Hall and chaired by one of BCF's leaders Allan Pope. The guest speaker was a previous Senior Pastor from Edinburgh's Charlotte Chapel the Rev Peter Grainger.

The Village Hall was completely packed with standing room only. Many had turned up in support of Andy from Harborough Evangelical Church where Andy had previously served as an Associate Pastor. Andy came to Brixworth recommended by BCF's previous Minister Phil Walter who had chosen to move on to a new National Church role, based in Market Harborough. Many thanks to all those who made cake and refreshments for after the service, it truly was a sight to behold!



Christmas Day at BCF Community Church

you can be sure of getting your Christmas Day off to the best start! Meeting in the school from 10:30-11:15 we celebrate together the birth of Jesus in Carols, readings and much more. A warm welcome awaits.



Tribute – Robin Bradford

It is with great sadness that we record the death of Robin Bradford, who did so much for our church and the wider community. Robin and his wife Wendy, and daughters Amy and Ellie became members of BCF shortly after its foundation in 1988. Both Robin and Wendy helped with Junior Church in these early years. Later, Robin became a Church Deacon and led the youth work. For almost 20 years he served the weekly Dynamites youth group, seeing generations of youngsters from Brixworth enjoy and learn from their Friday evening sessions. Robin was a prominent leader with our Holiday Club activities and his caring for those in our community was so evident. Having retired from

work, he was a valuable volunteer with his I.T. skills as a computer Buddy to many in Brixworth library. Robin will long be remembered for his cheerful commitment to his faith in Jesus Christ, his family and his community.



Operation Christmas Child

has got off to a good start and by the time you receive this publication we will hopefully be well on the way to beating last years figure! Our aim is 1,500 shoeboxes which will go to children in Eastern Europe – for many the only gift they will have.



The Olive Branch

More than just a Coffee Shop, the Olive Branch is the place to meet, be kept informed of Village life and receive a warm welcome. If you have never tasted the fine coffee and food – why not try it!

Mon, Tue, Thur 10-3.00, Fri 9.30-2.30,
Saturday 9.30-1.00
Wed 10-11.30

Pensioners Luncheon Club Wed 12 noon*
*(membership currently full ask to be added to waiting list)

The Olive Branch,
Library & Community Centre,
Spratton Road, Tel 889030

Run by volunteers this non-profit making venture has a welcoming atmosphere.



BCF Community Church Weekly Events

Sunday:	10:30 – 11:45	Main Service of Worship (Brixworth School) (including Junior Church and Creche)
Monday:	19:30 – 21:00	Prayer Meeting in the Olive Branch
Tuesday:	19:30 – 21:00	TNT – for Teenagers*
Wednesday:	19:30 – 21:00	Home study Groups
Thursday:	10:00 – 11:30	Olive Shoots – a Mums & Tots group*
Friday:	17:00 – 18:00 18:15 – 19:15	Dynamites Children's Club – age 5-7 years* Dynamites Children's Club – age 8-11*

(*held at the Library & Community Centre)

You will always receive a very warm welcome at any of our Services on a Sunday at 10:30, at the school. As we share together in worship, we also provide a Junior Church for children of all ages. Come and join us!

If you would like to know more about anything in Brixworth Matters or to know more about the Christian Faith, then phone Andy on 07958 604961

All Saints' Church, Brixworth

www.brixworthchurch.com

Dear Friends,

What do you like about Christmas?



Rector

Rev. Chloe Willson-Thomas

The Vicarage, Station Road

t: 01604 882014

e: chloe.thomas5@btinternet.com

Churchwarden

Mrs Vanessa Crooks

5 Whaddon Field

t: 01604 882058



With Christmas looming large, we all look forward to different things. What do we enjoy the most? Is it the food, the drink, the colourful decorations, the chance to sit round the Christmas tree with friends and family, or singing those wonderful traditional Christmas carols?

For me it's always been the excitement of giving to others-- Especially when my children were all small, I used to love wrapping up their presents and watching their reactions as they opened them on Christmas morning.

Christmas is a time when we can relish the act of giving, because that is what it's all about. In fact, giving is at the heart of the Christian faith. It's at the heart of being disciples of Jesus Christ. God gave us the gift of his Son at Christmas to give us hope: "For God so loved the world that he gave his only Son so that everyone who believes in him may not perish but may have eternal life" (John 3.16)

And the example of God's extravagant generosity for us has a transformative power. At Christmas we have the chance to give of ourselves to others. Not just presents--but our time, our energy, our hospitality and our love. At Christmas we choose generosity over greed.

And what do we get in return? We receive a happiness that can't be measured---of far more value than money or possessions. We get the knowledge that we have brought warmth, love and hope into someone else's life.

I pray that we all might experience the glow of true happiness this Christmas.

Rev. Chloe



Pattern of Services

1 st Sunday of month	10.30am All-Age Service
	11.45am Said Eucharist
	6.00pm Choral Evensong
2 nd Sunday	7.45am Said Eucharist
	10.30am Sung Eucharist
3 rd Sunday	10.30am Sung Eucharist with Junior Church
	6.00pm Taizé Service
4 th Sunday	10.30am Sung Eucharist
5 th Sunday	10.30am Sung Eucharist

Weekday Services

Tuesday	9.30am Holy Communion & 'Coffee Pot'
---------	--------------------------------------

ALL SAINTS CHRISTMAS MARKET

Saturday 3rd December 2-4pm
In Brixworth Church

Father Christmas will turn on
the tree lights at 3pm

* * * * *

CHRISTMAS TREE FESTIVAL

3rd - 18th DECEMBER



Growing Saints

Our Junior Church meets
every third Sunday of the
month, in church at
the 10.30am service .

Join us to learn more about
Jesus whilst having fun in
a friendly and caring
environment.

JELLYBEANS TODDLER GROUP

Wednesdays, at 1.30pm
in the Brixworth Centre

SINGING SAINTS YOUTH CHOIR

5pm on Wednesdays at the church

FROM THE REGISTERS

Weddings

Conrad Anthony McLaughlin & Rebecca Ann Holton
Steven Paterson & Emily Louise Wood
Neil Kieran Robinson & Joann Fiona Kelly
Carl George Russell & Nicola Marie Clark
John Michael Barratt & Amy Rose Forster
Thomas Edward Salt & Charlotte Emma Mulliner

Baptisms

Jessica Claire Kelly
Megan Kelly
Noah James Robert Garrett
Alfie George Eldred

Burials

Ian Geoffrey Chadwick



What's on

Area event Local event

Submit yours at www.brixworthbulletin.co.uk

1 Dec	Brixworth Neighbourhood Plan Vote	Village Hall
1 Dec	Simply Gershwin	Derngate
2 Dec	Ross Noble	Derngate
3 Dec	Christmas Tree Festival	Brixworth All Saints Church
3 Dec	Seth Lakeman	Derngate
3 Dec	Factory life in the Boot and Shoe Industry	Northampton Museum
3-4 Dec	Santas Special Trains	N'pton and Lamport Rail
8 Dec	History of the Royal and Derngate	Northampton Museum
9-31 Dec	Jack and the Beanstalk	Derngate
10 Dec	Christmas Workshop	Abingdon Park Museum
10 Dec	Village Bake-Off	Draughton
10 Dec - 2 Jan	Beauty and the Beast	Lighthouse, Kettering
10-11 Dec	Santas Special Trains	N'pton and Lamport Rail
14-30 Dec	Snow White on Ice	Castle Theatre, Wellingb'g
17-18 Dec	Santas Special Trains	N'pton and Lamport Rail
18 Dec, 0.30am	Christingle Service,	Brixworth All Saints Church
18 Dec	Brixworth Outdoor Christmas Nativity	Community Centre
20 Dec	Brixworth Parish Council Meeting	Community Centre
20 Dec 7pm	Carols around the Beacon (with BCF)	Brixworth All Saints Church
24 Dec 2pm	Crib Service	Brixworth All Saints Church
24 Dec	Santas Special Trains	N'pton and Lamport Rail
24 Dec 11.30pm	Midnight Mass	Brixworth All Saints Church
25 Dec, 10.30am	Family Communion	Brixworth All Saints Church

1-2 Jan	Mince Pie Special Train	N'pton and Lamport Rail
7 Jan	Motowns Greatest Hits	Derngate
10-14/1	Sunny Afternoon	Derngate
13-14/1	The Burlesque Show	Derngate
14 Jan	The Never Ending Story Ballet	Lighthouse, Kettering
16-21 Jan	The Full Monty	Derngate
21 Jan, 2.30 & 7.30pm	Jack and the Beanstalk	Brixworth Village Hall
22 Jan	The Circus of Horrors	Lighthouse
24 Jan	Brixworth Parish Council Meeting	Community Centre
27 Jan	Jack and the Beanstalk	Brixworth Village Hall
27 Jan	Ballet Romeo and Juliet	Lighthouse
28 Jan, 2.30 & 7.30pm	Jack and the Beanstalk	Brixworth Village Hall
28 Jan	Northampton's Shoe and Boot Heritage	Northampton Museum
28 Jan	The ELO Experience	Derngate
31 Jan - 4 Feb	St Petersburg Ballet Theatre	Derngate
1-3 Feb	The Very Hungry Caterpillar	Royal
3 Feb	Gerry Cross the Mersey	Lighthouse
5 Feb	Jim Davidson	Lighthouse
6-11/2	Henceforward	Royal
7 Feb	The Classic Rock Show	Derngate
13 Feb	Rumours of Fleetwood Mac	Derngate
14-18/2	The Twits	Derngate

16 Feb	So you think you know about Dinosaurs	Lighthouse, Kettering
17 Feb	Brendan Cole	Derngate
18 Feb	The Little Mix Show	Lighthouse
18 Feb	Vampires Rock	Derngate
19 Feb	RPO: Russian Masters	Derngate
23 Feb	Chinese New Year Extravaganza	Lighthouse, Kettering
28 Feb	Brixworth Parish Council Meeting	Community Centre
3 Mar	Lee Nelson	Derngate
4 Mar	Rob Brydon	Derngate
8 Mar	La Boheme	Derngate
10 Mar	Paul Carrack	Derngate
11 Mar	An Evening with Levison Wood	Derngate
12 Mar	RPO: Elgar's Cello Concerto	Derngate
14-18 Mar	Cirque Berserk	Derngate
20-25/3	Gilbert & Sullivan: Patience	Royal
22 Mar	Sean Lock	Derngate
24 Mar	Sensational 60s	Derngate
25 Mar	Stewart Lee	Derngate
6 Apr	The Bootleg Beatles	Derngate
18-22/4	Million Dollar Quartet	Derngate
28 Apr	Remembering Fred	Derngate
9-13/5	The Addams Family	Derngate
21 May	Al Murray	Derngate
9 June	Jimmy Carr	Derngate
25 June	Vintage & Classic Car Show	Draughton
24-28 Oct	NMTC - The Wizard of Oz	Derngate

Got an event? Tell us about it!

Did you know that you can also find out event calendar on our website? It is updated all the time, so its listings should be the most complete you can find.

Even better, the website has an event submission form that anyone can use to add their event. Whether it's a church fete or a jumble sale for charity, a club AGM or a sporting event – go add it to the events section at www.brixworthbulletin.co.uk. Local events are colour-coded to stand out from the rest. All submissions are automatically added to the printed Bulletin.

So whether you want to know what's on, or want to make sure the rest of the village knows about your organisation's upcoming plans, go and use the Bulletin's event calendar.

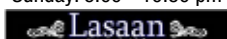
– Claudia Flavell-White

Taste the true flavours of Indian, Bangladeshi and British Asian cooking cultures.

OPENING HOURS

Open 7 days a week
(inc. Bank Holidays)

Monday - Saturday : 5 - 11pm
Sunday: 5.00 - 10.30 pm



Restaurant and Takeaway
(inc. deliveries)

8 Whitehills Crescent
Northampton, NN2 8EP
T: 01604 844244 / 843500
E: info@lasaan.co.uk
www.lasaan.co.uk



Helen West Jeweller

Individually Designed,
Gold and Silver Gem set jewellery

Ideal gifts

Open Wed to Sat, 10am-5pm

1a Kennel Terrace
Brixworth,
Northampton NN6 9DL
Tel: 01604 882755

www.hwestjeweller.co.uk



Flu vaccine – don't put it off

Cold weather doesn't have to go hand in hand with illness. Getting the flu jab is one way to help you and your loved ones stay well this winter.

Flu vaccination is part of the Stay Well This Winter campaign, a joint initiative from NHS England and Public Health England, to help the public ward off common winter illnesses.

Flu is a highly infectious disease and can lead to serious complications if you have a long-term health condition like: COPD; bronchitis, emphysema; diabetes; heart, kidney or liver disease or have suffered a stroke. Flu on top of health conditions like these can easily develop into something very serious and could land you in hospital. People with these and other long-term health conditions are eligible for a free flu jab through their GP or pharmacist.

The flu campaign also targets pregnant women and parents of children aged 2, 3 and 4 and in school years 1, 2 and 3. For eligible children, the flu vaccine is not an injection, just a quick nasal spray available.

Flu can be horrible for little children, and if they get it, they can spread it around the whole family.

Children who get the flu have the same symptoms as adults – including fever, chills, aching muscles, headache, stuffy nose, dry cough and sore throat. Some children develop a very high fever or complications of flu, such as bronchitis or pneumonia and may need hospital treatment.

The flu vaccine can help protect your child from flu and also reduce the chance of flu spreading to others.

If you have a child aged 2, 3 or 4, get their free nasal spray flu vaccine from their GP. Children in school years 1, 2 or 3 will get their vaccinations through their school in most parts of the country.

Pregnancy naturally weakens the body's immune system and as flu can cause serious complications for you and your baby. Pregnant women who get the flu may be less able to fight off infections, increasing the risk of becoming ill. The flu jab is the safest way to protect you and your baby against flu and you can have it at any stage of pregnancy, however fit and healthy you might feel.

If you are eligible for the flu vaccine, get it now – it's free because you need it.

Contact your GP, pharmacist or midwife to get the flu jab.

Visit www.nhs.uk/staywell for more information.



Panthers make a smart start to season

Brixworth Panthers, under 13s football team are enjoying their first season playing eleven-a-side football. The team won the Northampton Youth Alliance District League Plate in a thrilling cup final at Sixfields last year and are now playing their third season in the top tier, the NYDAL "A League". It is a very competitive league with several outstanding teams, and this is helping the team to develop and improve.

Brixworth Juniors is an FA Charter Standard Club. The club began life in 1992 and for the past 2 decades have gone from strength to strength. All of the coaches are at least FA level 1 standard with some FA level 2 and FA Youth Award Module 1 & 2 coaches.

The Panthers would like to say thanks to A Webb Plumbing and Heating who have kindly funded their new kit for this season. A Webb are a local company who pride themselves on their workmanship and customer service. Proprietor Adrain Webb said: "We are pleased to sponsor the team, who are a credit to Brixworth and play some great football." – Andy Glenn

Action for Happiness

Exploring what Matters, an eight week course by the Action for Happiness movement is coming to Pitsford.

Run by locals Lisa Brice and Sally Bernham, it offers an opportunity to explore what matters for a happy and meaningful life – together with a group of like-minded people.

Starting on February 7th, the course runs from 6.45-8.45 at The Old Dairy, Bunkers Hill Farm, Moulton Road, Pitsford.

Each session has a theme, based on a big question, such as What really matters in life? What actually makes us happy? or How should we treat others? Each session follows a similar format with an inspiring mix of learning and discussion.

Book at www.eventbrite.co.uk/e/the-action-for-happiness-course-northampton-7-feb-2017-tickets-27604203917

Jack and the Beanstalk

Coming the village hall in January is Brixworth Drama Group's very own take on the panto, Jack and the Beanstalk.



Adapted by Brixworth's very own James Skeggs, this promises to be great family fun for all ages – so come along and banish those post-Christmas blues!

Performances will be on Saturday 21st January, 2.30pm and 7.30pm, Friday 27th January 7.30pm and Saturday 28th January, 2.30pm and 7.30pm.

Tickets available from Brixworth Hardware or Heather on 881166.

Go Girls!



Around 12 months ago Brixworth Juniors decided to set up a new girl's football team. It had been over 20 years since the village last had a dedicated team for girls, so well overdue! Club secretary Simon Compton kicked off the girl's team initially. He was soon joined by one of the girl's parents, Alex Green, who recently gained his FA Level 1 coaching certificate. In the 12 months since, the number of girls that have started to train with Brixworth Juniors has grown rapidly and we now have more than 25 that train with us on a regular basis.

Initially the team was largely involved in friendlies and local tournaments, but in September this year the Under 12 group joined the Northants Women's and Girls Football league. The transition to league football has been challenging at times but the girls have done well registering their first win earlier this month against a strong side from Corby.

The club has also expanded the age range of the girls involved and boosted its coaching team with Wayne Biggs and Russ Parsons. As well as the original 10 and 11 year olds we now have a strong foundation for an Under 10 and possibly an Under 9 team going forward.

The club would like to say a massive thanks to Jackson Grundy and the Football Foundation who gave the club some funding to set the girls up with very smart new kit. The funding also allows the club to place coaches onto training courses, purchase new goals and enables the girls to extend their training to the astro pitches for the winter months. Jackson Grundy's MD Nick Rees must be complimented on his readiness to help the club. The company has been kind enough to donate for the past two years and the support they give to the club is very much appreciated by Simon and the teams that they have assisted.

The team recently headed to Sixfields to watch West Ham's visit against the Cobblers – another, perhaps slightly better known, team that Jackson Grundy partners with! – Alex Green

Tennis High Tea Tournament

Following on from last year's successful High Tea Tournament, Brixworth Tennis Club held an even grander event this year.

On Sunday 18th September 17 club members, nine men and eight ladies (pictured below), took part in the 2016 High Tea Tournament in glorious sunshine and perfect tennis temperature.

Playing mixed doubles each player sweated through a fixed number of games with various different partners and in the grand final Sean Millichamp and Jonathan Martin (Club Secretary) narrowly beat Lorraine Munns and Will Haxby (Club Chairman) to take the 2016 title and trophy.

The event was watched and enjoyed by a good number of spectators and the bar was open throughout the tournament with a delicious tea laid on afterwards.

This adult tournament followed on from the successful youth tournament held in June of this year and due to the success of both events the club plans to hold similar tournaments next year.

If anyone is interested in joining the tennis club, please contact Jonathan Martin at secretary@brixworthtennisclub.org.uk or visit the website <http://www.brixworthtennisclub.org.uk> for details.

– Peter Saxton



Short Mat Bowls

Jenny Chapman became the first woman to win the club's Annual Singles Tournament. Held on the 28th October at the Brixworth Center, 18 club members played in a 5 end knock out with Jenny Chapman and Bill Bates coming through to compete in the 9 end final. Jenny won by eight points to three to become the first female champion.

Afterwards Jenny said she was very nervous but thrilled at winning and had really enjoyed the competition. The picture shows

Jenny collecting her awards from the club chairperson Janet Hickman with runner-up Bill Bates.

The club won most of the pre-season practice matches but in league matches so far Brixworth has drawn one and lost one.

If you would like to try Short Mat Bowling, we meet on Fridays at the Brixworth Centre, Church Street at 2.30pm and 7.30pm, just come along and have a go and a bit of fun. For more information contact Janet on 01604 880317 or 07762 211721. – Martin Carnell



This page is part sponsored by Watson Fuels