

BRIXWORTH BULLETIN



Including Creeton, Draughton, Hanging Houghton and Lamport
Issue No.3

December 2004



BYGONE TASTY MORSELS

History Society's repast from the past



Brixworth History Society members were treated to an evening of gourmet cuisine at their September meeting 'Food through the Ages' in the Village Hall. This unique banquet of gastronomic delights was served up by committee members Audrey Hawkins, Heather Parr, Mandy Dawkins, Deni Willis and Sue Mallard who had researched and cooked dishes popular in Roman Britain, the Medieval Period, Elizabethan and Victorian Times and during the Second World War. Following their individual presentations the ladies, dressed in period costume, offered members a taste of foods and drinks including hard boiled egg mice, stuffed dates, chicken portage, fyggey in wine, boiled gingerbread gilded with gold leaf, hippocras wine, cheese d'artois, bakewell pudding, a war cake and woolton pie.

For more information about Brixworth History Society telephone 01604 880604 or visit www.brixworthhistory.org



CHARITY RIDE CYCLISTS

CYCLE THE NILE CHALLENGE



We did it! We four local mums, Di Leng, Debs Hadfred, Karen Davidson and Deb Mace, got on our bikes and out of the 78 who started, were able to claim that!

The going was extremely challenging; the weather being the biggest problem. The temperatures ranged from 40°C to 48°C, and the second day was in the desert. We were told afterwards, that it had registered 41°C in the shade, 48°C outside, but we were never in the shade except when rubble-carrying lorries rattled past us, spraying sand and dust from the road.

Anyhow, we managed the heat by pouring water over ourselves at every opportunity, but trying to avoid doing so in villages, as it was Ramadan and villagers could not eat or drink between sunrise and sunset and the sight of these barefaced and barelegged women blatantly wasting water could have been perceived as a taunt.

We did endure a small amount of stone throwing, but only from over-exuberant small boys. The majority of the locals were fantastic and very enthusiastic.

For a once in a lifetime challenge, I cannot recommend it highly enough. The sense of achievement was wonderful, fuelled by the fact we had put so much time and effort into the training. If you are thinking of doing something pretty special then go for this. 'Women for Women' is the Charity and the funds go towards research in aid of women and their babies; that is any medical problems that can occur throughout conception, pregnancy and birth.

To date we four have raised over £11,000 and the money is still coming in. Many thanks are given to all of you, for your support, encouragement and sponsorship.

Deb Mace

DENTIST'S BIKE RIDE

Matthew Nuttall would like to thank everyone who sponsored his bike ride from Land's End to John o' Groats in aid of charity. Together Jon, Kim and he raised in excess of £9000. The distance covered was 932 miles, uphill all the way and the time taken was 9 days. The total time in the saddle was 59 hours and the longest day was the last one, nearly 9 hours covering 145 miles from Loch Ness to John o' Groats. It must have been the sight of the monster!



MARTIN ANDERSON 'VIVA CUBA'

It's not often that Brixworth resident, Martin Anderson gets a rush of blood to the head, but when the words 'viva Cuba' appeared in a national newspaper appealing for cyclists to ride across Cuba on behalf of charity, that's precisely what happened. Therefore in March 2005, Martin will set off with a number of like-minded people aiming to cycle 350km over 5 days on a round trip commencing in Havana. "Easy" says Martin, until he remembers the temperature of 30°C, the humidity and the mosquitoes. "Not like Brampton Valley way then?"

The trip is on behalf of REGAIN, a charity dedicated to supporting tetra and paraplegic sportsmen and women. Next year they intend to raise over £250,000 and hope that the Cuba trip will contribute around £30,000 towards this figure. To take part, Martin has to raise a minimum amount of sponsorship and hopes that local businesses and residents will take the opportunity of supporting him on behalf of such a worthy cause. If you wish to sponsor Martin, or would like any further information he can be contacted at East Longs Barn, Harborough Road, Brixworth (Tel: 01604 882146)

DIRTY OVEN



Don't worry... Professional help is at hand from OVENU...

The UK's favourite Oven Cleaners.

Our franchised technicians remove grease, fat and burnt-on carbon deposits, in around three hours, to an amazing standard...GUARANTEED.

Our CAUSTIC FREE system offers a safe alternative to conventional methods. Hundreds of delighted clients every week use OVENU.....

...Why not call today for a FREE QUOTATION?

We also clean Hobs, Hoods and Microwaves to the same standards.

OVENU
NORTHAMPTON

01604 432115

36 Breezhill, Woolton Fields, Northampton

www.ovenu.co.uk

RAYBELL & SONS SURFACING LTD

DOMESTIC & COMMERCIAL
FREE QUOTATION - NO JOB TOO SMALL

TARMACADAM, BLOCK PAVING,
SLABBING, PATIO, DRIVES ETC.



Unit 3, The Old Brickworks, Harborough Rd., Pitsford, NN6 8AA
TEL: 01604 883688; FAX: 01604 883513

BRIXWORTH CENTRE OPEN DAY



The Centre Management Committee held an Open Afternoon on Saturday 18th September and a good attendance of over a hundred visitors led to takings of £708. Amongst the attractions, sumo wrestling proved to be very popular. Special thanks are due to Kate Green and Alan Stock who worked very hard, helping stricken warriors to their feet and assisting with the contests. A quiz was held on the 19th November to raise further money for the Centre.

SHORT MAT BOWLS

A suggestion has been made that a short mat bowls facility be set up in Brixworth. A number of Northants villages already have such a club.

This activity however would be quite expensive to set up, so organisations such as the National Lottery and other sources of possible grants need to be approached to cover these costs.

Before an approach can be made for funding, the amount of interest needs to be ascertained. A meeting has been arranged in the Brixworth Centre on Friday January 7th at 7.30pm to check the interest.

PAVEMENTS

Some four weeks ago W.S. Atkins acting on behalf of Highways began a programme of repairing some of the pavements in Brixworth. The planned repair of the pavements in Harborough Road/Northampton Road came to a halt in the middle of November when an electricity cable was severed on the stretch past the Coach and Horses public house. Nearby residents were without electricity for several hours as a result. Work has now been abandoned on the pavements, so the remainder of the programme will not be completed. Apparently the contractor is concerned that services run too close to the surface of the tarmac of the pavements. Presumably some of our pavements are deemed to be irreparable!

Looking for reliable
local legal services?

Welcome to
the partnership



borneohughesmartell
Solicitors

9 Notre Dame Mews | Northampton | NN1 2BG
Phone: 01604 624822 | www.borneohughesmartell.co.uk

SIRENS
LINGERIE

*Designer Lingerie
& Hosiery*

Open
Tues - Fri 10 - 5.30pm
Sat 10 - 5pm

**1A Kennel Terrace
Brixworth
01604 882400**



Brixworth Pharmacy

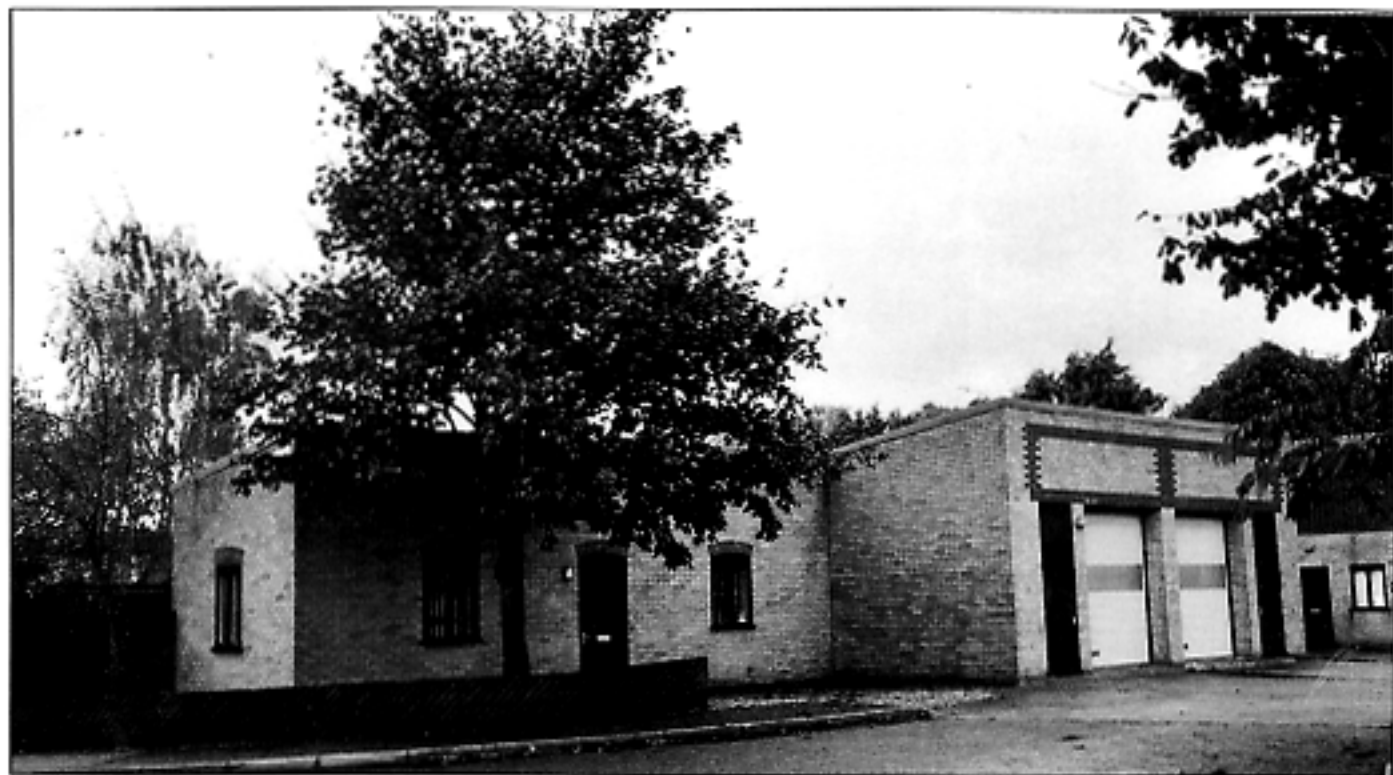
Lots of things for Christmas:
superb range of
toiletry gift lines

Photographic processing
plus a range of other
services including CD format

Christmas Opening Hours

Open 9 am - 6 pm, Sat. 9 am - 1 pm
Christmas Eve 9 am - 5 pm

BRIXWORTH YOUTH CLUB



Change of use for 10 Ironstone Way Brixworth (pictured above) from industrial to a youth club was granted by DDC on the 10th November. Cllr F.Wigg told the Bulletin that some activities such as boxing training should commence before Christmas. The change of use has been granted for six months in order to assess the response by parents and residents in providing help to support this new initiative. If volunteers are not forthcoming to run the club on an ongoing basis, then the club will have to close at the end of that period.

BRIXWORTH HIGHWAYS

Having spent the money elsewhere, the County Council has now under spent £60m on the County's roads over the last 10 years. However the County Council are looking to spend additional monies this year on road 'schemes' and I am pleased to report that the following four schemes are due to be completed during this financial year in Brixworth at a total cost of £289,000:

- A508 Junction - HighSt. - cost £110,000
- Northampton Rd - Holcot Rd - Sealdwell Rd - £94,000
- Northampton Rd - Harbo' Rd - Spratton Rd - cost £45,000
- Spratton Rd - cost £40,000

This scheme work is very welcome in the village. However one of the problems, which I believe will need addressing when the County Council comes to renegotiate their contract with W.S. Atkins, is the need to ensure that more money is invested in day to day repairs and maintenance work on our highways, rather than just on specific schemes i.e. repairing potholes and other dangerous road surfaces as soon as possible

Cllr Chris Millar



DRYSEAL LIMITED

FOR ALL GENERAL BUILDING AND JOINERY WORKS, EXTENSIONS AND CONVERSIONS

Also approved contractors for:

- | | |
|---------------|------------------|
| ■ Extensions | ■ PVC-U Fascias |
| ■ Plastering | ■ Woodworm |
| ■ Renovations | ■ Damp-proofing |
| ■ Roofing | ■ Ceramic Tiling |

21 Breach Close, Brixworth NN6 9HT
Tel/Fax 01604 881715; Mobile 0771 230 9914

EXPRESSIONS UNISEX HAIR STUDIO

Now offers:

- Chiropody
- Pedicures
- Manicures

We will be open until 1p.m. on:
Christmas Eve,

Thursday 30th. and

Friday, 31st December

70 NORTHAMPTON ROAD
BRIXWORTH

TEL: 01604 880770

New Clients most welcome

LATE NIGHTS UNTIL 7pm
TUES., THURS., & FRI.

CHAIRMAN'S CHRISTMAS CARD

The children of Brixworth Primary School were asked to design a Christmas card for the Chairman of Daventry District Council. All the children took part and there were some wonderful paintings to judge which made it very hard to choose a winning design.

After much deliberation, four designs were chosen and the prize winners were Jacob Reid – runner up, Kathleen Taylor – runner up and the overall winner was Francesca Godfrey whose card will be used by the Chairman. An additional prize was awarded by the Chairman's Lady to Hannah Saxton. As well as the four prizes, Mr David Boucher, head teacher was given a cheque for £250 for the school.

All four children will be taken to the printers in Daventry to see their cards being printed. All the paintings submitted by the children will be on display in the Council Offices in Daventry over the Christmas period.

Cllr Liz Wiig

LETTER TO THE EDITOR

Dear Sir

In reply to a letter from 'a local resident', whilst sympathising with his or her personal experience, we feel it is an exaggeration and insult to those who voluntarily work very hard mowing the grass on a regular basis, to describe the churchyard as a 'dumping ground' and 'an overgrown mess'. We are extremely grateful to all those people who give so generously of their time to help keep much of the churchyard neat and tidy.

Yes, there are overgrown graves and some could be cared for by relatives, but many are graves of people who no longer have relatives living in the area. These older graves are more difficult to keep tidy. Perhaps there are people willing to take on and look after one of these. We can point out a few if asked. The Church pays approx £500 a year to provide a rubbish bin, so there is no excuse for anyone to dump rubbish in the churchyard.

Sometime ago the P.C.C. discussed the possibility of paying someone to keep the churchyard tidy, but we decided we couldn't afford it. Our first priority is and always will be the care of your Parish Church. It costs at least £40,000 per year to keep the Church in Brixworth open - of which we have to pay £24,000 + to the Peterborough Diocese. We would like to say "Yes, we will pay £2,000 per year to keep the churchyard tidy" but we just haven't the funds.

'Local resident' writes about our beautiful Church and 'how proud we all are of it' - how about some help towards the upkeep, then perhaps the churchyard could be included!

S.Woodhead and S.Jowers
Churchwardens All Saints' Church

G.HAMSON & SON

GARAGE SERVICES

Customer Breakdown Service
General Repairs and Servicing of Cars and Commercial Vehicles
Vehicle Steam Cleaning and Wax Oil Treatment
Suppliers of Pre-packed Solid Fuel
Air conditioning service now available
CLASS 4 & CLASS 7 M.O.T. TESTING

We wish our customers a Happy Christmas & New Year



Harborough Road Garage, Brixworth
Telephone: 01604 881038



the village dental practice

Visit your local friendly dental team
for a healthy mouth and
smile with confidence.

All patients are warmly welcomed.

Please 'phone or call in for a free consultation.

opening hours:

monday & friday 8.30 – 12.00; 1.00 – 4.30

tuesday & thursday 10.00 – 1.00; 2.30 – 6.30

wednesday 8.30 – 12.30; 1.30 – 5.30

spratton road, brixworth
telephone 01604 880293

Koruna Reflexology Clinic

Fiona Riez MSc, BFRP

Member of the Association of Reflexologists, South Devon Reflexology Practitioner

Reflexology is a complementary therapy that takes place on the feet, but benefits the whole body.

It can be helpful for many health issues including:

*Musculoskeletal symptoms, *Menopausal imbalance, *Joint pain, *Digestive complaints, *Migraine and headaches, *Stress and stress related symptoms, *Chronic fatigue, *Weight gain, *Pregnancy care.

Flower Offering:

*Each flower Remedies for support with emotional issues, *Ear Candies, *Indian Head Massage, *Reiki Healing

Treatment room at:

64, Stroudhill Way, Brixworth, Northampton

Tel. 01604 889606.

Email: korunareflexology@hotmail.com

RIGIFLEX DEVELOPMENT

This proposed development was discussed along with other planning applications at the Brixworth Parish Planning Committee held at The Olive Branch on Wednesday 27th October 2004. Several members of the public who attended that meeting have contacted Bulletin team members expressing their dismay regarding the manner in which the meeting was conducted.

However the P.C. decided to object to the planning application for the following reasons.

- High density of dwellings
- Three storey dwellings not in keeping with street scene in either Froxhill Crescent or Northampton Road
- Loss of attractive hedge bordering Froxhill Crescent. This hedge is noted within the VDS as of particular interest and should be kept in its current state to preserve the aesthetics of the area and wildlife
- Limited on-site parking will cause on-street parking on Froxhill Crescent
- Entrance onto Froxhill Crescent will increase the danger to pupils attending nearby Primary School
- Northampton Road entrance is onto the existing bus stop lay-by
- Froxhill Crescent is already approaching a dangerous situation with traffic during the busy school drop off and collection times. The extra traffic created by this development will increase this problem
- Traffic from the development entering onto Froxhill Crescent will in part create a 'Rat Run' along Froxhill Crescent and Brampton Way, both of which are currently experiencing problems
- The amount of designated affordable dwellings within the development falls below the required 29%
- Extra housing will increase pressure on already insufficient shops and services
- Development is contrary to Local Plan Policy HS11 and County Structure Plan policies H3 and H8
- The gardens of the dwellings are only 6 metres in depth as opposed to what is believed to be a minimum of 10 metres required by planning

The DDC Planning Dept. has informed the Bulletin that this application will be discussed at Daventry on the 1st DECEMBER. DDC Officials are recommending APPROVAL at this meeting.

AN INTRODUCTION TO BRIXWORTH PARISH COUNCIL

Have you ever wondered what the Parish Council does, well why not come along to a meeting and find out.

Full Parish Council meetings are held on the last Tuesday of every month beginning at 7.15pm in the Olive Branch, Brixworth Community Centre. All members of the public are welcome – you do not need to speak, but if you want to, there is a 15 minute slot made available.

In addition to the full Council meetings, every three weeks we hold Planning Committee meetings where we discuss all applications sent to us by Daventry District Council, these are usually held on a Wednesday and the public are allowed to participate before each application is heard. Whilst on the subject of Planning, this Council has introduced a system of advising each applicant of the date on which their application will be considered by the Council with an invite to attend. If members of the public wish to object to any application (or indeed support it), they are urged to write to Daventry District Council stating their views and copy the letter to the Parish Council.

The Recreation and Amenities Committee hold their meetings on the third Monday of every month, where items for discussion include everything from the upkeep of the recreation grounds, play equipment and the future of the Ashway Sports ground.

Other meetings held are Highways and Environment at six weekly intervals, which cover anything from dog bins to tree surgery, and General Purposes bi-monthly, which cover a multitude of subjects including the Library/Community Centre, health & safety, risk assessment, human resources, the Village Hall and many more.

We also hold Finance meetings where we keep an eye on the parish purse and set the precept for the following year.

All these meetings are open to the public and dates and times can be found on the Parish notice board which is currently inside the foyer of the Community Centre.

As well as the committees, we have representatives on the Village Hall committee, the Brixworth Centre committee, Library/Community Centre committee, a path warden, a school governor, National Association of Local Councils representative, a Police representative and a representative on the Brixworth Travel club. So, as you can see, we are involved in many things.

We recently held a planning meeting to discuss a proposed application for the Rigidflex site. Seventeen members of the public came along and all were listened to and their views duly noted. But it would be very welcoming to see members of the public taking such an interest in all of the Parish Council meetings. Liz Wigg, Chairman of Brixworth Parish Council

COLEMAN'S BOUNCY CASTLES

Bouncy castles all sizes and themes

RODEO BULL & SURF MACHINES

FUN DAYS...FETES...OPEN DAYS

BUNCIE RUN
GLADIATOR DUEL
WRESTLING RINGS

Visit our website for more details
and prices at
www.colemancastles.com

01604 882888

Could your computing skills do with a boost?

Jargon-free and friendly tuition is available for beginners and for more experienced users, in your own home or office, on a one-to-one basis.

Work at your own pace to improve your general computing skills, handle e-mails & the Internet, use word processing & other software and download, organise & enhance images from your digital camera.

And for business users,
Sage Accounts & Sage Payroll.

For more information, contact
George Hammerschmidt

t: 01604 880212
e: ham@nildram.co.uk

BB CENTENARY 2005

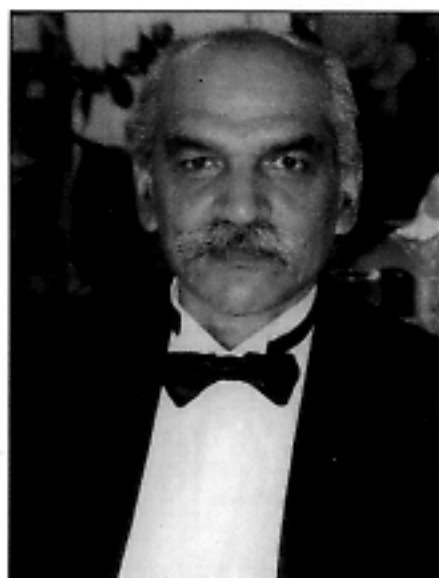
D. J. Watkins-Pitchford (known as BB) was born in Northamptonshire in 1905 and was an author and artist. A retrospective exhibition of his artworks is to be held at the Northamptonshire Museum and Art Gallery between the dates of 12 March and 8 May 2005. Talks have also been held with Brixworth Country Park in regard to a permanent exhibit being placed there to commemorate his centenary. A preliminary design has been drawn up for a wood carving featuring *The Little Grey Men*.

*We would like to wish all our readers,
distributors and advertisers*

a Very Happy Christmas and a Prosperous New Year

SURESH (GEORGE) PATEL

1944 - 2004



The whole village was saddened and shocked to hear about the sudden death of Suresh (George) Patel, our very popular and respected village newsagent.

Suresh was born and grew up in Kenya, spending his early life in the countryside where he helped and worked on a farm. When he started to work full time, he worked for the Sugar Corporation in Kenya, with whom he stayed for over 20 years. When the political climate in Kenya changed and life became difficult for him and his family, they came to Britain in 1983.

Two years later they took over Brixworth Stores. Suresh soon became established and struck up good relationships with his customers.

His welcoming and friendly manner is sorely missed. We extend our sympathy to Jan, his wife, and all his family.
Dave Kirton

My children and I would like to express our sincere thanks to the residents of Brixworth and surrounding villages for their touching, comforting messages of sympathy and moral support to our family on the sudden death of my husband Bachu/George/Suresh Patel on the 14th September. Nothing prepares one for such an event in one's life but at our most challenging and difficult time, we greatly appreciated the sharing of grief which comforted us.

I would like to assure the people of Brixworth and our loyal customers that we will try and continue to offer the excellent service my husband, George has provided over the past 19 years. Our special thanks to Reverend A.J. Watkins and the Church team for conducting a wonderful service on our behalf for George.

Once again thanking you all sincerely
Mrs Jan Patel & Family

SANDS HAIRDRESSING

Stuart Ellis, proprietor of Sands Hairdressing is a third generation hairdresser. His grandmother started the business and then his mother, Helen and he took the salon from Newlands to Bridge Street in Northampton. Stuart trained in several prestigious west end of London hairdressing establishments and later with a partner created several salons in Northampton before moving to Brixworth independently 12 years ago. The salon was extensively re-fitted and expanded last year and now includes a second floor technical department for perming, colouring, hair extensions etc. There is considerable space to the rear of the property which could be used for further expansion. Stuart employs 3 stylists, Paul and Julie have been with him for over 15 years and Heather was trained in-house after starting as a Saturday junior 5 years ago. He believes in carrying out in-house training supplemented by staff courses to keep abreast with the latest techniques. He has produced training videos for Wella and hairdressing schools in Germany, Belgium and Holland. His clients are not only local to Northamptonshire but come on a regular basis from all parts of the country. One client who had her hair cut by Stuart at the age of 4, comes to the salon once a month from Brighton for cutting and colouring. Stuart regards his clients as friends and enjoys meeting them, combining business with pleasure. He is one of the lucky few, who really enjoy their work and passing on his vast expertise to others in the hairdressing business.

RED LION

Harborough Road, Brixworth

BED AND BREAKFAST

(Open all year, single, double & family rooms available, all with ensuite, televisions & tea making facilities).

TRADITIONAL PUB FOOD

SUNDAY LUNCH: (booking advisable) 12 - 3
LUNCH TIMES: Tuesday - Saturday 12 - 2
EVENINGS: Tuesday - Saturday 6 - 8

01604 880245



RAYBELL SKIP HIRE

Part of Raybell & Sons Surfacing Ltd.

- SKIP HIRE
2-20 cubic yards from £68 inc. VAT
- LOOSE AGGREGATES
1 - 5 tonne loads @ £30.00 per tonne
25 + tonne loads @ £25.00 per tonne
- BUILDING SAND, SHARP SAND, BALLAST, MOT, & 20mm GRAVEL
Minimum delivery - 1 tonne. Very competitive rates.
Delivery free locally, £5 out of town.
Credit cards welcome

Tel: 01604 883688; Fax: 01604 883533
Mobile: 07714 670700

BOOKINGS NOW
BEING TAKEN FOR
CHRISTMAS AND
NEW YEAR
CELEBRATIONS

The Coach and Horses

a tavern of immense character and charm - over six hundred years old, with a cosy, blazing inglenook fire.

See our blackboards for
freshly cooked dishes
available daily.

Traditional Sunday lunch
served from 12 onwards.

Open 7 days a week
Lunchtime: 11.00am - 3.00pm
Evenings 5.30pm - 11.00pm

Harborough Road
Brixworth
Tel. 01604 880329



COUNTRY EYE

A CHRISTMAS PUDDING FOR THE BIRDS

Into a large old saucepan put some animal or solid vegetable fat. Melt it until just warm. Then add any or all of the following ingredients:

Congeaed Christmas pudding
Stale Christmas cake

Half-eaten mince pies (with or without teeth-marks)

A couple of handfuls of unsalted peanuts
Cut up bits of chicken, bacon or other meats

Raisins, currants, sultanas, chopped apple and pear cores

Oats, wholegrain wheat or birdseed

Then stir the whole gooey mess until it is well mixed. Turn it into empty yoghurt pots, margarine tubs and leave to set. Any surplus may be frozen (clearly labelled) for later use.

In cold weather this unappetising-sounding concoction could mean the difference between life and death for our garden birds. Some idea of how important this is may be gauged by the fact that tiny birds like wrens and blue tits need to eat their own weight in food every other day. Every waking moment in winter is an endless quest for something to eat.

Wrens especially rely on protein-rich insect and other invertebrate food. Every crevice is searched for hidden spiders, hibernating aphids, caterpillars and the like. On a bitterly cold night a sleeping bird can burn up 20% of its body weight in an effort to stay warm. That's like you going to bed weighing twelve stone and waking up weighing about nine and a half. Don't you just wish? Staying with wrens, they have a special trick to help them through the coldest weather. Normally strict loners, they take to sleeping with the neighbours. I once disturbed about ten of them from an old thrushes nest where they had spent the night.

But what about the guy who was last in, left with his tail hanging out in the cold? Well it seems that the mass of birds is constantly on the move, each trying to get to the warm centre. So everyone gets a turn with its tail in the cold. A sleepless night but it was at least a warm one. It brings a whole new meaning to the phrase 'a corporate body'.

ChemDry Home Valet Service

PROFESSIONAL CARPET, UPHOLSTERY
AND CURTAIN CLEANING SPECIALISTS



Freephone
0800 980 6015

Proprietors
David & Bev Haynes

- Most carpets dry in 1 hour
(can be walked on immediately)
- No dirt attracting residue -
carpets stay cleaner longer
- Oriental rugs a speciality
- Dries odour free
- Specialists in carpet and
upholstery protection
- Upholstery and curtains restored
to their original glory
- Leather and Vinyl specialists
- Professionally insured

For a free 'on site' quotation call

01604 621562



MILLENNIUM BEACON LIGHTING ON NEW YEAR'S EVE

The Millennium Beacon in All Saints' Church car park will be lit again on New Year's Eve at 11.30pm. Refreshments will be available. Everyone welcome. Contact David Hymas 881755.



THE FOX IN THE POUND BOOKSHOP

The Pound House, Harborough Road,
Brixworth, Northamptonshire
Telephone 01604 830337

Opening hours: Tues. - Sat., 10 a.m. - 5 p.m.
If not in stock, we can obtain books within days.



PLUS...
**Be Bronzed
AT HOME**

Party bookings on
SOLGO TANNING SYSTEM
Minimum of five people from
£20 per head. HOSTESS FREE

Call Tat on
0781 5171432



The Human Mechanics

Helen Mathieson MSc, BSc(Hons) Ost
Sam Ryall BSc(Hons) Ost

Osteopaths can be thought of as human mechanics. With 4 years training, we are specialists in understanding how the various parts of the body work together. Many people think we only treat back pain and sciatica, but in fact we treat the entire body - muscular strains, trapped nerves, shoulder, elbow, hip, knee and foot pain, headaches, neck injuries etc.

Each consultation costs £30, with patients typically achieving 90% relief of symptoms within 3-5 sessions. We receive many patients through GP referral and as members of the General Osteopathic Council, we are accepted by all major insurance companies. For further professional advice, or to make an appointment, please contact us at the clinic most convenient for you:

Brixworth Osteopathic Clinic,
2 Church Street 01604 889241

The Wharf Practice,
Union Wharf, Market Harborough 01858 464888

Improve your quality of life - see an Osteopath



KNOTS AND KNITTING



Harold and Ethel Scott came to Brixworth from Leicester in 1984 and since 1997 have lived in New Street in a bungalow with stunning views of the Nene valley and the Brixworth Church. Very sadly, Ethel died in June of this year and is greatly missed by members of the Church, W.I. and attendees of the Olive Branch as well as relatives and friends.

Harold's abiding interest is tying knots in wire or fibre strands, whilst his wife was an expert knitter. Harold maintains that the principles of knotting and knitting are very similar, particularly the end locking bites and the complex patterns. Harold practices his art to the highest level, producing not only the Matthew Walker knot in normal 3 or 4 strands but he has reached 120 strands for this complex knot. He has written and published booklets on knotting matters - 'Knot sculptures in wire' and 'A guide to the multi - single strand cruciform Turk's Head'. The reviewer of this last booklet praises the detail of the 35 line drawings, the 7 tables of data and the 6 scanned images of completed projects. Knottologists need a good knowledge of mathematics and the derivation of formulae for their craft. Leonardo da Vinci and Albrecht Durer designed beautiful patterned knots in addition to their other well-known talents.

Harold and Ethel were married for 48 years and have twin daughters. Harold was brought up in an orphanage at Chiltern House where he taught himself to knit, darn, cook and the craft of knotting from the Ashley book of knots. His childhood upbringing served him well during his war-time years in the Merchant Navy.

Harold now teaches knots to boys in year 9 at Northants Grammar School and attends regularly Guild meetings of the International Guild of Knot Tyers where he lectures and demonstrates his expertise in this subject. It is very heartening that he ensures that his enthusiasm and vast knowledge is passed on to future generations.

Harvey Fox

NATIONAL TRACTION ENGINE TRUST 50th Anniversary Road Run



People in Brixworth on Saturday 25th September 2004 saw a rare spectacle. One hundred and two engines steamed through the village to take part in the above event. The start and finish was Hollowell Steam Group's own field near Hollowell. There were two routes, one 28 miles long, the other 18 miles, both converging on Brixworth. Steam engines were brought from all over the country for this unique event, travelling along Scaldwell Rd and Station Rd, with a pause at the Coach and Horses.

NEIGHBOURHOOD GARDENING SCHEME

Under legislation RCI, large housing developments have to provide 10% of the area as open space. The Wilson, Bryant and Beazer developments in the recent past have had to donate this open space to the Village. The Wilson and some of the Bryant spaces have still to be adopted by the local council. Highways maintain the verges but the Parish Council is responsible for the maintenance of the open spaces.

In addition, the Parish Council is responsible for the Pocket Park, the area around the Community Centre and the Millennium Garden, some of which are maintained by volunteers. This voluntary basis can only be maintained by the recruitment of additional help.

The Bulletin interviewed Nick Brown who is Subject Manager for Horticulture at Moulton College, with a view to exploring the BBC Neighbourhood Garden Scheme. This scheme aims to persuade enthusiastic amateur gardeners to gain qualifications and help with projects in the community. To qualify as a badge gardener whereby the gardener would be qualified to lead a group of gardeners in a community project, the individual would need to have at least one of the following qualifications:

- City & Guilds level 2 certificate in gardening.

- Edexcel level 2 BTEC First Diploma in horticulture.
- NVQ2 Amenity Horticulture
- The Royal Horticulture Society General certificate

All Neighbourhood Gardeners must take the ASDAN level 2 certificate in Community Volunteering.

Once you are a badge holder, you must commit 100 hours a year to retain the badge. The cost of the two courses is about £250. *However the Brixworth Bugle would be prepared to help fund the cost of one volunteer willing to undertake these courses and promise the 100 hour commitment.*

Moulton College would be prepared to provide a lower level course in plant maintenance and propagation for 8 people, which would last 20 hours, covering eight weeks and would cost £24. *If there are residents who are prepared to attend this course and commit themselves to 50 hours of community gardening per year, then again the Bugle would be prepared to help with the funding. The Editor of the Bulletin would be pleased to hear from any interested and enthusiastic gardeners.*

If volunteers are not forthcoming, then the Parish Council will be forced to raise the money through the Community tax to pay for this work to be carried out.

INHERITANCE TAX ALERT!

Simply stated: - Anybody who dies and who has a house and other assets worth more than £263,000 ("the nil rate band"), could be subject to Inheritance Tax at 40% of the amount in excess of this £263,000. For example a married couple have a house (assuming no mortgage) worth £300,000 and other assets of say £50,000, on the death of the husband or wife, there is no tax to pay, if the surviving spouse is left everything. But on the death of the survivor, the tax payable would be £34,800 calculated as follows: £300,000 + £50,000 = £350,000 - £263,000 = £87,000 times a whopping 40% = £34,800.

In 1997 it was estimated that half a million people were liable to Inheritance Tax, but now with the average price of houses more than doubling and the Inheritance Tax threshold stagnating, it could be closer to two million. It is amazing that so many people do not recognize this penal tax on death and the impact it could have on families. So every house owner is advised to assess their affairs so as to elude or at least reduce this tax.

My advice is for you to consult an expert on inheritance tax. In my experience the drafting of a will is an important key in this financial planning. There is no simple solution for avoiding this tax, so this professional advice is a must.

It is not possible in this article to cover all the steps that can be lawfully taken to elude this tax, but some pointers may be helpful when you seek this professional advice.

1. There are a number of complex schemes around, but these should be avoided. In any case most of these schemes have already been negated and George Brown has in his last budget rendered ineffective retrospectively one of the last remaining schemes relating to the family residence.
2. Consider the inclusion in your will of what is called a "Discretionary Will Trust". This enables a married couple to obtain the nil rate bands on both of their deaths, thereby doubling the nil rate band to £526,000 on the combined estate. There are a number of drawbacks such as the surviving spouse continuing to live in the family home if it is part of the "Discretionary Will Trust". Also the surviving spouse has not the same control over the trust's assets. In these circumstances it is important that the

house is owned as "tenants in common" rather than "joint tenants". It is also worth noting that any assets bequeathed to ones spouse are exempt from Inheritance Tax. Partners as opposed to married couples are treated less favourably.

3. Take out life insurance and put it into trust so that it is not part of your estate and therefore not subject to Inheritance Tax. However the premiums must be paid out of income without affecting your life style. This could be used to pay any Inheritance Tax, thereby keeping the estate intact.
4. When one dies the Inland Revenue often wants to know what money has been given away during the previous seven years. Unless they are covered by various exemptions, they will be included in the estate, thereby subject to tax. Some examples of these exemptions are gifts of £3000 per tax year (£5,000 from parents on a child's marriage) and £250 each tax year to any number of individuals. Additionally you can make regular gifts out of income, but they must not affect your standard of living. However, greater amounts given away (if you can afford it) and called "Potentially Exempt Transfers" are only free of Inheritance Tax if you live another seven years, although some tapering relief is available if you die during the last three years, but only on that which is in excess of the nil rate band. So that some control can be still exercised over these giveaways, a discretionary trust is advisable.
5. As a backstop, a will can always be changed after death, provided that all the beneficiaries agree, in order to reduce the Inheritance Tax liability. An example of this is for the beneficiaries to change their inheritance for the benefit of say their children, thereby jumping a generation.
6. Finally, there is always one sure way to reduce your Inheritance Tax liability and that is to give everything to charity or alternatively, which is more fun, is to "SKI" i.e. Spend your Kids Inheritance. David Hymas



QUEEN MOTHER'S FAVOURITE CAKE

Pour one breakfast cup of boiling water over 8 oz chopped dates and 1 Tsp. bicarbonate of soda.

Allow to stand while making the following mixture -

8 oz sugar	1 Tsp vanilla essence
3 oz butter	1 Tsp baking powder
1 beaten egg	1 Tsp salt
10 oz plain flour	2 oz chopped nuts

Cream butter and sugar, add beaten egg and other ingredients. Add to mixture and bake for 35 minutes at 350° C in a 9" or 12" shallow tin.

Topping for cake

5 Tbsp brown sugar	2 oz butter
1 rounded Tsp arrowroot	2oz cream

Mix together and boil for 3 minutes.


When the cake is almost cold, spread the topping while it is still warm.

Recipe passed on by Gwen Crooks

simply
DiFfeRent
designer led products



- * Christmas Cards
- * Decorations
- * Stocking Fillers
- * Beautiful China and Glass
- * Jewellery
- * Cufflinks
- * Gift-wrapping Service



130 Northampton Road,
Brixworth,



40'S WEEKEND

Northampton & Lamport Railway held a 40's Weekend on the 25th and 26th September at the Pitsford and Brampton station. The event was well attended and we show below a photograph taken at the event.



THE ESCAPED P.O.W. IS RECAPTURED

After escaping from Brixworth P.O.W. camp, the escapee caught a train from the local station, but he was identified by passengers who alerted the guard. When the train stopped at Pitsford and Brampton Station, Allied soldiers were waiting on the platform!

BRIXWORTH VILLAGE HALL

The Brixworth Village Hall annual general meeting was held on Tuesday 16th November. The committee now comprises of Les Tyrer (Chairman), Natalie Sharp (Administrator), Dennis Coles, Kath Redley, Harvey Fox (Treasurer), Caroline Monk and Ann Shafer. Graham Hughes has now resigned.

Revised hire charges on a per hour basis are:-

	Category 1	Category 2	Category 3
Small Hall	£5.90	£7.20	£10.30
Main Hall	£7.10	£9.30	£12.40
Both Halls	£8.40	£12.40	£15.50

Category 4 hire rates are by negotiation

LUCY MORGAN Airline Pilot



Brixworth girl Lucy Morgan, daughter of Liz and the late Paul Morgan has recently become a First Officer with Loganair, the Scottish franchise of British Airways. At school, when asked which career path she wished to follow, she replied that she wanted to be an airline pilot. During school holidays, whilst studying for A levels, she began working towards her PPL at Sywell and flew solo just after her 17th birthday, qualifying four years ago. She attended the Oxford Aviation College for an intense ground school schedule, which covered the Systems of a Boeing 737, World Meteorology and Air Law. This was followed by her CPL training in Phoenix, Arizona, when she flew Piper Warriors and Arrows before she completed her commercial test. On returning to the UK, she began her instrument rating phase of the course involving a further 20 hours on the Warrior, an hour's spinning in a Zlin and finally finishing with 40 hours on a Piper Seneca. She graduated in September 2002. Since completing the Saab-type rating course at the SAS Flight Academy in Stockholm, she is operating with the Saab 340 fleet in and around Ireland, the Isle of Man and all the highlands and islands of Scotland.

Her career advisor had told Lucy that an airline pilot was not a proper job. Lucy now agrees that it is not a proper job - it's a lot of fun that she happens to get paid for!

INDEPENDENT FAMILY RUN FUNERAL DIRECTORS



TOBY HUNT
FUNERAL SERVICE

*Providing a Complete Funeral Service on a personal Basis
Serving the County's Towns & Villages*

Northampton / Earls Barton

(01604) 811129

The Village Funeral Home, Earls Barton, Northampton NN6 0NA



S
A
N
D
S

We would like to take this opportunity to wish all our clients a very merry Christmas and a happy new year.

For all the guys out there gift vouchers are available for that last minute Christmas present.

A multitude of coloured hair extensions are available for that special party look

Main stockist for
MATRIX PAUL MITCHELL

SANDS HAIRDRESSING

1 KENNEL TERRACE
BRIXWORTH
NORTHAMPTON
01604 880484/882686
SANDSELLIS@AOL.COM

• BULLETIN BOARD •

HOW TO DRUG PROOF YOUR KIDS

This six evening course starts on Thursday 20th January from 7.30 to 9.30pm in the Olive Branch Coffee Shop at the Library Community Centre.

Research has shown that parents and families can be a vital factor in keeping children from becoming involved in the harmful use of drugs including alcohol.

The course is open to all parents and is based on the successful Care For The Family Course produced with Hope UK. It is run by a local drugs education worker in association with Brixworth Christian Fellowship.

The six sessions together with a parents handbook cost £15. To book a place or find out more, please phone Mike Nice on 880086

ALL SAINT'S CHURCH BALLOON RACE

The organisers of the Balloon Race wish to thank all who took part in this event. Balloons travelled to various parts of England, from Wilby to Essex and to different parts of France and Belgium.

The winner of the £100 prize was Miss Alison Brown whose balloon ticket was returned from Eliasbrunn in Germany having travelled a distance of 704 miles.

They will be organising another balloon race next year during the Annual Festival weekend at the beginning of June and again the prize will be £100 awarded to the winner whose balloon travels the furthest.

BRIXWORTH DRAMA GROUP PANTOMIME

Brixworth Drama Group's next production is scheduled for late February 2005. It is to be the pantomime 'Jack and the Beanstalk' and will be produced by James Skeggs who now lives in Brixworth. He moved here a year ago from London. He has appeared in the West End productions of 'Evita' and 'Cats' and in Vienna and Berlin productions of 'Jesus Christ Superstar', 'Man from La Mancha', 'West Side Story' and 'The Merry Widow'. The cast will include Robin Armstrong, Tony Farrow, Alee Hodgson, Sue l'Anson, Mike Culverhouse, Andy Knight, Wendy Hammond and others.

The proposed dates are:-

Friday	January 21st @ 7.30pm
Saturday	January 22nd @ 2.30pm
Saturday	January 22nd @ 7.30pm
Friday	January 28th @ 7.30pm
Saturday	January 29th @ 2.30pm
Saturday	January 29th @ 7.30pm

Jack and Pat Bason wish to thank family and friends for the many cards, flowers and presents they received to celebrate their Golden Wedding at the end of October - special thanks go to those responsible for the surprise dinner party at the end of a wonderful day.

NEW BURGLARY HELPLINE

Whilst burglary is not a major problem for this area in terms of numbers, it can have a devastating effect on those who become victims, and the Police believe that they should do everything they reasonably can to prevent these crimes from happening.

In order to make crime prevention advice widely available in our area, the Police have set up a dedicated phone line where residents can ring in to request a burglary pack. The pack comprises of leaflets giving advice on measures to make your home more secure, how to deal with distraction burglars, property marking, an ultra violet marker pen and advice on choosing a burglar alarm.

The number is 01327 303189

MYLES and SIMS Architects

Contact us for all your building design needs.

No fee for a preliminary consultation.

3 Kennel Terrace
Brixworth Northampton NN6 9DL
Tel: (01604) 880294 Fax: 881667

Bed & Breakfast Rookery Cottage Studio

Maddy and Pete Kottler are open for B & B, with a charming self-contained bedroom and en-suite, attached to Pete's new studio,

Rookery Cottage
Church Street
Brixworth NN6 9BZ

01604 883782
pkottler@aol.com

CONSERVATION OFFICER MOVES ON

After twenty years in post DDC's highly respected Conservation officer, Ian Smith, regarded as one of the most knowledgeable conservation officers in the country has left DDC to become senior conservation officer for the Cotswolds Council. The vacancy has been filled by Rachael Booth

BLASONS GARAGE AT THE HUB OF THE VILLAGE



Open: Mondays - Saturdays
Northampton Rd.,
Brixworth
Tel: 01604 880229



BSP PROPERTY MAINTENANCE

32 Froxhill Crescent
Brixworth

- General carpentry
- General plumbing
- Laminate & hardwood flooring
- Doors & windows



- Plastering, painting & decorating
- Ceramic tiling
- Kitchens & bathrooms
- Guttering & roof repairs
- Fencing

All works undertaken by fully qualified tradesman with 15 years' experience

No job is too small. For free, no obligation estimates, please call Bryan or Stacey in Brixworth on:
01604 880301 or 07963 768250 or 07941 750288

THE ASHWAY PLAYING FIELDS

THE PLAN HAS CHANGED

Consultation Alert

After much deliberation and subject to on-going cost analysis, The Parish Council is now minded to move the proposed changing facility and car park on The Ashway Playing Fields, from the originally designated site off The Ashway/Iron Pikes roundabout (the car park is already in place).

The new proposal would involve access from The Ashway spine road, about 40 metres from the Knighton's Way 'T' junction towards the Eastfield Road footpath. It would incorporate the construction of a drive way through the now maturing natural barrier, originally planted to act as a buffer between the playing fields and the neighbouring housing development.

The new car park and changing rooms would be positioned in the south eastern corner of the playing fields. This change in thinking would, it is believed, allow for the accommodation, sometime in the future, of at least one more full sized playing pitch on the site.

It is thought that part of the already constructed car park off the Iron Pikes roundabout may be retained. Following consultation with neighbouring residents, a fresh application for planning permission would need to be sought from DDC.

If neighbourhood residents have a view on this proposal or wish for further information, they should, in the first instance, contact The Parish Clerk. Tel: 881243.

Bulletin Reporter: Paddy Fox.

APOLOGY

In the last issue the recipe for Onion and Cider soup was incorrect due to a printing error. The ingredients should have shown 1/2 of a pint of dry cider and 1 1/2 of a pint of chicken stock. It appeared in print as 1 instead of 1/2.

Brixworth Landscaping

For personal service, design & creation of your ideal garden, call Matthew Cox on:

Phone: 01604 882390
Mobile: 07702 317828

5 Burrows Vale
Brixworth
Northampton NN16 9DS

The Parish Council intends to consult residents about the type and location of the children's play equipment to be purchased for The Ashway Playing Field. It is likely that the consultation will be in the form of a display to be mounted in the foyer of the Library Community Centre showing various possible schemes. There will be an opportunity to leave written observations and suggestions. A similar exercise undertaken in the summer for the equipment purchased for St. Davids' Recreation Ground proved very successful. When the remaining piece of land on the playing field has been handed over by the developers, consultation will also take place over its potential use which is limited due to the difference in levels. By locating changing rooms in this area and providing a new access, it should eventually be possible to make the best use of the whole area without incurring prohibitive costs for the connection of services.

The Recreation and Amenities Development Committee steers the project and meets in public in the Library/Community Centre on the third Monday of every month at 7.45pm.
Bob Chattaway, Chairman, P.C Recreation and Amenities Committee.

New Year Resolutions for 2005?

Inspiring Xmas present?

**Make 2005 the year when you
make things happen.**

Ambitious sports people and senior executives know that coaching helps them maximise potential and achieve more.

Coaching can benefit everyone.

If you want to **make decisions,
commit to action and
see results,**
call for a **free consultation.**

Jacky Pratt

Accredited Practitioner Coach (ECI)
0800 195 5789
jacky@ambitioncoach.com

See www.ambitioncoach.com for more details, sign up for a free newsletter "Ambitious Living" and receive a gift e-book about happiness at work.

WASHINGTON DIPLOMACY

Will the plot ever thicken?



Because of her husband's diplomatic career, local author and award winning crime writer, Elizabeth Ironside has, at the moment, precious little time to visit Northamptonshire, the much loved county of her birth and early years.

Writing under her nom de plume, Ms. Ironside is in fact Dr. Catherine Manning, wife of Sir David Manning, British Ambassador to The United States. She is currently working on her sixth novel but, unsurprisingly, is finding it hard to complete. Her mother, Sheila Colton, lives in Hanging Houghton and recently visited her daughter in Washington. Sheila can confirm that the hectic life of the British Embassy's first lady can be somewhat uncondusive to literary creativity.

Catherine began writing in 1984 and had become a well established writer by the time her husband had become Ambassador to Israel between 1995 and 1998. Her novels include 'A Good Death' and 'Death in the Garden' (Published by Hodder & Stoughton). Her first novel 'A Very Private Enterprise' was broadcast on the BBC's 'Book at Bedtime'.

Inevitably perhaps, the back-ground to most of her novels has been based on some of the many places Lady Manning has lived during her husband's diplomatic career – one wonders which setting she might exploit during the Washington years.

Reporter: Paddy Fox.

Bed & Breakfast at its finest in The Old House, Scaldwell



- Single & double rooms
- TV in all bedrooms
- Inside bathroom
- Office facilities
- Tea & coffee making facilities
- Full bar ideal for ladies with children

all in a period decor house with grand open fire

Mrs Margaret Vinton, The Old House,
East End, Scaldwell, Northampton NN6 9BZ
Tel/Fax: 01604 280378 e-mail: m.vinton@scaldwell.co.uk

PLANNING STATUS REPORT

BRIXWORTH CRICKET CLUB

The 1st XI finished in a disappointing manner, losing too many of the games in August and September but avoided the possibility of relegation. Injury and unavailability were vital factors as under-strength teams were fielded by both teams in the latter stages of the season. The Sunday team played to a creditable level but more importantly enjoyed their cricket.

Our U 15, in their first season at this level, had a tremendous season, finishing 5th in the FG Watts league, due in part to their improving ability and equally to the tremendous dedication of the coaches, Andy Bransby and Jason Cockrill. All but two of this team will be available next season, so prospects for continued success look promising. Equally important will be the way that we continue to integrate these players in the senior teams next year.

The club committee are embarking on a serious player recruitment drive using all available contacts, but we would love to hear from interested people in the village. Whilst senior players are a priority, we can always find a welcome space for potential scorers, ground assistants and anyone who is interested in cricket. We are launching another junior side next year, at the U 11 age group and young cricketers, boys or girls, plus interested parents are welcome to join us.

Our winter net programme for seniors and juniors commences at 5.30pm on Sunday January 9th at Moulton Leisure Centre.

Despite comments in the last edition, our plans for the new ground are well in hand and the levelling of the new field should soon be visible. We are in regular contact with Dallas Burston, over the layout of the new facility and especially the clubhouse to ensure it meets the needs of the cricket club and other users.

Our Annual Dinner will be on Saturday November 27th at Cold Ashby golf club.

Anyone requiring any more information about any aspect of Brixworth C.C. should contact Chris Timm on 01604 882591 or Ray Foster on 01604 881532.

BRIXWORTH RUGBY CLUB

Extensive enquiries have been made by the Bulletin to ascertain whether the Rugby club still exists or not. We have drawn a complete blank. If anyone is connected with this club, please contact the Editor Harvey Fox 880337 or Bob Chattaway 881281

REF NO. & DESCRIPTION OF APPLICATION	P.C RECOMMENDATION & D.D.C. DECISION
DA/2004/0997 54 Stonehill Way. Conservatory to rear of property.	P.C. 28/9 DDC Approved
DA/2004/0907 4 Water Pike. Single storey rear extension and first floor extension over garage.	P.C. 28/9 DDC Approved
DA/2004/0887 10 Hunt Close. Single storey extension.	P.C. 28/9 DDC Approved
DA/2004/0903 Land at rear of 75 Northampton Rd. Outline application for residential development.	P.C. 28/9 DDC Approved
DA/2004/0870 The Old Crown, 2 Church St. Two storey extension to rear and construction of outer leaf wall to existing gable.	P.C. 26/10 DDC Approved
DA/2004/1018 39 Ringwell Close. Two storey extension to side of property.	P.C. No objection. 26/10 DDC Approved
DA/2004/1025 30 Grass Slade. Single storey extension to rear of property.	P.C. No objection. 26/10 DDC Approved
DA/2004/1044 The Old Farmhouse, Harborough Rd. Replacement of conservatory roof.	P.C. No objection. 26/10 DDC Approved
DA/2004/0996 26 The Ashway. Bedroom extension over garage.	P.C. No objection. 26/10 DDC Approved
DA/2004/1002 Land adjacent to 10 Kennel Terrace. Demolition of existing workshop and construction of three new dwellings	P.C. 26/10 Objection. DDC Refused. Subject to Appeal.
DA/2004/1116 and 1117 The Lodge, Harborough Rd. Conversion of barns to dwelling.	P.C. 15/9 No objection. DDC Refused.
DA/2004/1176/ 97 Northampton Rd. Demolition of boundary wall and formation of vehicular access (retrospective)	PC15/9 Objection. DDC Approved.
DA/2004/1178 Park Farm, Spratton Rd. Change of use of part of farmyard to B5 (storage) use (retrospective)	PC 15/9 No objection.
DA/2004/1179 Park Farm, Spratton Rd. Change of use of part of farmyard from agriculture to mixed use comprising B1c, B8 and agriculture (retrospective)	PC 15/9 No objection.
DA/2004/0707 29 Burrows Vale. First floor extension and single storey rear extension. Planning Appeal.	PC 15/9 Objection. DDC refused. Subject to Appeal.
DA/2004/1209 The Old Pinfold Brickworks, Harborough Rd. Erection of a two storey office building to replace the existing single storey building.	PC 6/10 No objection. DDC 11/10 Approved.
DA/2004/1242 1A Lorraine Court. Ground floor extension and extension above existing garage.	PC 6/10 No objection. DDC 2/11 Approved.
DA/2004/1262 DDC. Change of business premises to a youth club at Unit 10, Ironstone Way.	PC 6/10 No objection. DDC 10/11 Approved.
DA/2004/1296 Biggles, Northampton Rd. Demolition of existing factory, to be replaced with three and two storey residential units.	PC 27/10 Objection. Hearing at DDC 1 st . Dec.
DA/2004/1293 2 Spratton Rd. Two storey extension to side of dwelling.	PC 27/10 No objection. DDC 15/11. Approved.
DA/2004/1306 24 Newlands. Single storey glazed extension to rear and new roof to outbuilding. New porch over front door.	PC 27/10 No objection.
DA/2004/1321 7 Poppy Leys. Ground and first floor extension to dwelling.	PC 27/10 No objection.
DA/2004/1327 21A Broad St. Alteration to garage to create room on top for use as home office. Two additional rear garages and sun room extension to existing dwelling.	PC 27/10. No objection
DA/2004/1358 Mobile Home, Scaldwell Rd, Brixworth. Retention for further 2 years.	PC 17/11. No objection.
DA/2004/1380 20 Northampton Rd. Demolish existing garage & kitchen replace with new kitchen & garage ext.	PC 17/11. No objection.
DA/2004/0007 NCC Countryside Services. Construction of Reed bed at Brixworth Country Park.	PC 17/11. No objection.
DA/2004/1398 79 Northampton Rd. Ext. to form dining room & WC.	PC 17/11. requested temp. deferral. pending further enquiries.
DA/2004/1412 Froxhill Crese. Conservatory to rear	PC 17/11. No objection.
DA/2004/1422 The Grange, Kennel Terrace. Felling of tree in conservation area.	PC 17/11 objection - requests that work be carried out in order to retain tree, if possible.

KPD AIRPORT SPECIALISTS

Heathrow
Gatwick
Stansted
Luton
Coventry
East Midlands
Birmingham
Manchester
Liverpool
Norwich

BOOK TAXIS EARLY FOR
CHRISTMAS & NEW YEAR



KPD EXECUTIVE TRAVEL
SIMPLY THE BEST WAY TO GO.

Local & Long Distance
Pre book Taxi Services
Office Hours: 8am - 6pm, Mon - Thurs.
8am till late, Fri - Sat.
Tel: 01604 882798
Web: www.kpdcars.co.uk

SPORTS PAGE ***** **SPORTS EDITOR: John Blason**

BRIXWORTH FOOTBALL UNDER 14s



Back row: l-r Daniel Lane, Paul Lucas, Barnaby Anderson, Andrew Greasley, Chris Brand (Captain), Michael Stanton, Sean McKenna, Austen Greatorox. Front row: Adam Bazeley, Danny Mitchell, Shane Boubber, Kerry Smyth, Mikey Hewitt.

We have sixteen players in our squad, mainly from Brixworth and surrounding villages and every effort is made to ensure everyone who turns up gets a game. Our home kit is kindly sponsored by Merry Estate Agents and away shirts by Cotter Residential Lettings.

Our season so far has been excellent in the John Henry League. We've played six games, won five and drawn one, scored 38 goals, conceding just four and are top of the table. In two cup competitions, we're through to the second round of the County Cup, playing Stanwick Rovers later this month and we narrowly lost against one of the top sides in the county, Ise Lodge, in the knock out cup. Our priority for the rest of the season is to secure promotion by winning the league.

BRIXWORTH JUNIOR FOOTBALL UNDER 12s



Top row l-r Antonio Campanaro, Sam Bingham, Sam Willis, Richard Dunham, Chad Hughes, Josh Robbins, Daniel O'Ware, Ryan Pietrangelo. Bottom row: Biagio Serino, Connor Pearce, Tom Jones, Alex Bettison, Matthew Smorfit, Chris Anderson, Anthony Hamlyn, Callum Clearsky.

The team is currently enjoying their second season in the Milton Keynes and Border Counties League. After an average start to the season the team has now won two games in a row and sits third in the league table. Training on Thursday nights on the astro-turf at Moulton is helping to fine tune the boys passing and dribbling skills! Thanks must go to all the parents for their support, despite the travelling, and to my co-helpers Paul Bettison and Steve Hughes. Dave Willis 881887

BRIXWORTH GIRLS FOOTBALL

The three junior girl teams have had a good start to the season. The U12's have changed from 7 to 11 a-side and are learning the structure and tactics of this different game, earning valuable league points in the process. The U14's, last years League and Cup double winners, are settling down well into the Central Warwickshire league. The opposition is a lot stronger and the girls are raising their game to meet the new challenge. The U16's have had some cancelled fixtures but November should see their season get under way. All teams wish to thank their sponsor, Den Drijver Kitchens and Bathrooms, for the new kit. The teams train on a Thursday evening and any girls interested in coming along should contact Craig Holmes on 01604 706427 for details. There are players needed at U12 and U16

BRIXWORTH FLAMES U15 FOOTBALL TEAM



Back row: Martin Kilsby (Manager), Gavin Mobley, Richard Gill, Jack Jones, Edward Jones, Daniel Kilsby, Alex Williams, Daniel Porter, Dave Knight & Alan Mould (Trainers) Front row: William Mann, Ryan Knight, Darren Smith, James Newton, Tom French, Daniel Mould, Ricky Humphries (Captain)

Last season saw the team improve greatly after training all summer, with the team finishing half way up the league.

Currently team morale is high and the squad of dedicated determined young men have bonded with a real sense of purpose making them a very formidable side, currently sitting mid table, only 5 points behind the leading team.

The Brixworth Flames are a success story, who has regular supporters, a good coaching team and a great team spirit. The lads are a credit to their parents. For more information or to arrange a trial, please contact Martin Kilsby on 01604 881454 or visit their website at www.freewebs.com/brixworthflames.

BRIXWORTH ASFC

A new season is now well underway for Brixworth ASFC. Two new managers have been appointed, namely Andy Spencer for the first team and Paul Willis for the reserves. Andy has had a positive start to the season with some excellent results winning a total of six out of eleven games. Craig Spraggons scored 14 goals this season and is already in contention for top scorer in the league if his form continues. A good win in their cup match against Gteton (6-3) has also got them off to a flying start in the cup competition. Morale is very high.

However, Paul has had mixed results with the reserves. There have been a couple of good wins but equally a few heavy losses. At times the team has struggled for players due to injuries, but new players are signing on and the depth of the squad is growing.

Training continues on a Wednesday evening from 7pm until 9pm at St David's playing field, anyone wishing to play is more than welcome to join.

Thank you to all the sponsors for their continued support which is a vital part of fund raising for the club. Also thanks to all the committee for their hard work in running the club, especially Keith Dohman, 'Dolly', for his excellent work on the pitch and commitment to the club. Anyone wishing to add their support or join the club can contact Sarah on 882584 or Emma on 880566.

BRIXWORTH RED LION F.C.

Brixworth's newest team has started life in the Northamptonshire Sunday Combination in fine style.

We have been put in Division Three, where a 100% start has seen us win all six league games and progress into the next rounds of all the cup competitions.

The management team of Adam Knight, Andy Roe and Jason Cockerill has assembled a mostly young squad, with over three quarters of the players coming from the village and surrounding area.

At the moment due to the situation with the Ashway Playing fields, our home fixtures are at the Racecourse. Anyone interested in coming along and supporting us, please contact me or see the notice board at the Red Lion.

Finally, many thanks are given to Nigel and Gary for their sponsorship and hospitality, without which the team would not have got off the ground.

Ian Bandey 882215

BRIXWORTH FOOTBALL UNDER 10'S

We are running two teams, one in the John Henry league and the other in the Northants 92 with our home games being played on the Ashway.

The John Henry team have been put in the 'A' league as a result of winning the Northants 92 cup last season. As expected the league is very competitive and despite putting in some strong performances, we are in the bottom half of the league and need a few good results over the next few months to ensure we maintain our place in the league.

The Northants 92 team has seen the introduction of a number of new players and although having only played two games to date they have shown a lot of good spirit.

Training continues to be well attended and has moved to the new Astroturf at Moulton College which is an excellent facility. On the social front we are getting a lot of good parental involvement and have a number of social and fund raising events planned.



Soft Furnishings

Quality, made to measure and hand-finished, curtains, blinds and cushions.

For a free, no obligation quote call Tina Cullen on 01604 784292

e-mail: qualitycurtains@btinternet.com